

Melissa Development Quarterly Update

Period Ending March 31, 2018

Melissa Population (1990 – 2018)							
Year	Population	Year	Population	Year	Population	Year	Population
1990*	557	2004	2,846	2009	4,483	2014	6,703
2000*	1,539	2005	3,172	2010*	4,695	2015	7,800
2001	1,885	2006	3,536	2011	5,200	2016	9,000
2002	2,211	2007	3,869	2012	5,700	2017	10,000
2003	2,524	2008	4,185	2013	6,154	2018 est.	10,500

*Official Census figure

Building Permit Summary

Development Type	1st Quarter 2018		2018 Summary	
	Permits Issued	Valuation	Permits Issued	Valuation
Single Family	115	\$32,193,008	115	\$32,193,008

Building Permit Comparison - Single Family Permits

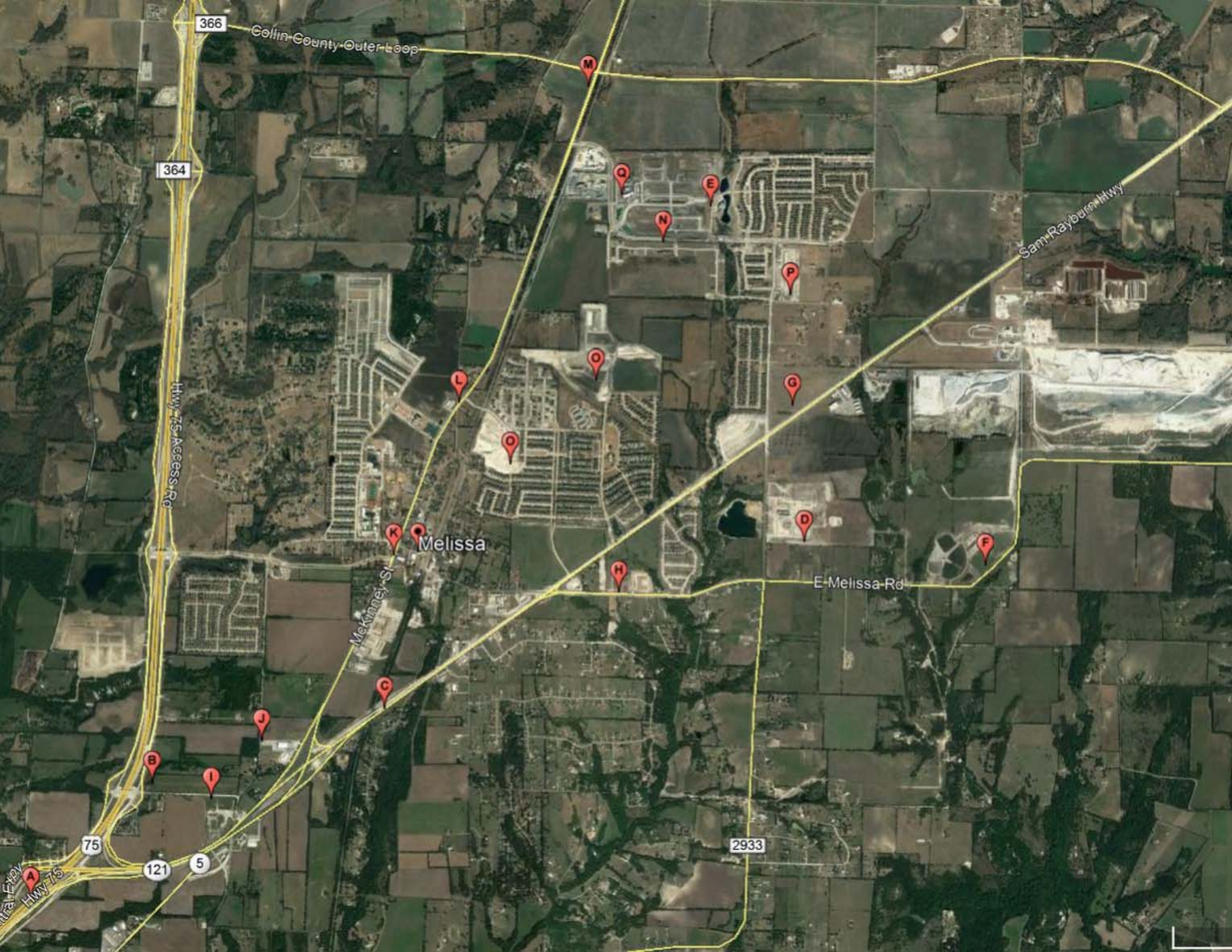
Quarter	2016		2017		2018	
	Permits	Valuation	Permits	Valuation	Permits	Valuation
1 st	66	\$17,034,039	63	\$17,115,011	115	\$32,193,008
2 nd	61	\$16,445,888	122	\$29,890,341	-	-
3 rd	43	\$11,861,774	79	\$19,737,646	-	-
4 th	56	\$16,922,806	73	\$20,869,910	-	-
Total	226	\$62,264,507	337	\$87,612,908	115	\$32,193,008

Approved Single Family Platted Lots

	Jan	Feb	Mar	Apr	May	Jun	Jul	Aug	Sep	Oct	Nov	Dec	YTD
2018	110	-	294	-	-	-	-	-	-	-	-	-	404
2017	119	468	125	-	-	-	-	183	120	-	-	-	1,015
2016	-	-	81	-	-	-	-	167	-	-	-	-	248
2015	108	-	-	-	85	-	-	-	-	140	341	-	674
2014	-	-	76	96	-	-	-	137	-	-	-	-	309
2013	61	-	-	83	84	70	-	-	88	92	-	-	478

Sales Tax Comparison

	2018 Sales Tax to Date
McKinney	\$9,141,283.71
Roanoke	\$2,557,182.19
Prosper	\$1,371,758.88
Fairview	\$627,323.61
Sunnyvale	\$548,827.38
Princeton	\$466,849.12
Anna	\$407,985.56
Melissa	\$375,326.46
Celina	\$326,774.33
Van Alstyne	\$222,643.70



366

Collin County Outer Loop

364

Hwy 75 Access Rd

Sam Rayburn Hwy

Melissa

Mckinney St

E Melissa Rd

75

121

5

2933

Central Express Hwy 75

A

B

I

J

C

L

O

O

H

N

E

G

D

P

F

M

Point	Project	General Description
A	TxDOT Green Ribbon Grant Funding	City awarded \$2.5 million grant from TxDOT for the beautification of the US 75 and SH 121 interchange. Construction began in March 2018.
B	Buc-ee's Retail site	Construction began on a 52,000 facility in February 2018. Project expected to be complete by February 2019.
C	SH 121 Reconstruction	SH 121 will be widened from SH 5 to west of the Outer Loop Anna. It is expected to take approximately two and a half years to build the project and the estimated completion is spring 2019.
D	Melissa High School	First phase of the new High School; estimated completion summer 2018.
E	North Creek Expansion	Completion of the residential lots on the west side of the subdivision; completion spring 2018.
F	100 acre City Athletic Complex	Phase 1 of a multi phased facility; Phase 1 will consist of practice field, two competition baseball fields with shade structures with stadium type seating, concession stand/ restroom building, bullpen & soft toss screen, and competition soccer fields. Estimated completion for soccer is spring/summer 2018.
G	Brookside	Second Phase to be completed in fall 2018.
H	Gala and Provision at Melissa	Senior only apartment and traditional apartment complex being constructed. Completion expected summer 2018.
I	Davis Road	2007 Bond Election project; Construction underway with utilities being relocated. Project completion in spring 2019.
J	Fannin Road	2007 Bond Election project; Construction underway with utilities being relocated. Project completion in spring 2019.
K	Traffic Signal	TxDOT to install traffic signal at Fannin and SH 5; activated in late March.
L	Pennsylvania/SH 5	The traffic signal study met TxDOT warrants, and City and TxDOT have agreed that TxDOT will design the signal and the City will construct the signal. Construction to be completed by August 2018.
M	Outer Loop/SH 5	City requested TxDOT traffic signal warrant study. TxDOT approved the intersection for signalization. DART is designing the preemption equipment for the signal. No timetable for construction.
N	Throckmorton Road	Extension from SH 5 to Milrany; Construction contract awarded to Mario Sinacola; Anticipated completion in spring 2018.
O	Liberty Phase 5&6	Liberty subdivision expansion; completion by mid to late 2018.
P	Magnolia Ridge Phase 2	Magnolia Ridge subdivision expansion; completion expected by summer 2018.
Q	North Creek Elementary School	New Elementary School; estimated completion summer 2018.