
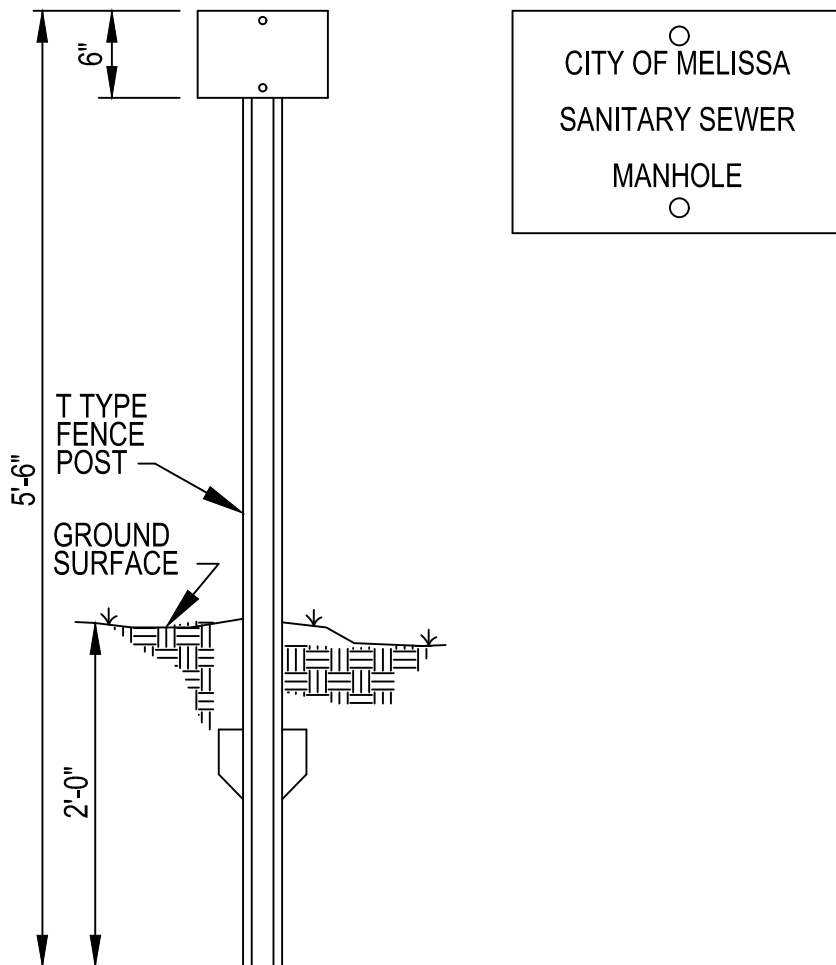


1. MANHOLE SPACING FOR TRUNK LINES IS AS FOLLOWS:
 - 400' MAX. SPACING FOR UP TO 8" DIAMETER PIPE.
 - 500' MAX. SPACING FOR PIPE 10" THROUGH 15" IN DIAMETER.
 - 800' MAX. SPACING FOR PIPE 16" THROUGH 30" IN DIAMETER.
 - 1000' MAX. SPACING FOR PIPE 31" THROUGH 48" IN DIAMETER.
 - 2000' MAX. SPACING FOR PIPE 54" AND LARGER.
 - AT ALL LOCATIONS WHERE DIAMETER OF PIPE CHANGES.
 - AT ALL LOCATIONS WHERE HORIZONTAL AND VERTICAL ALIGNMENT CHANGES.
 - AT THE ENDS OF ALL MAINS LONGER THAN 400'.
 - AT LATERAL CONNECTIONS 6" AND LARGER.
2. THE MAXIMUM ALLOWABLE MANHOLE SPACING IN SUBDIVISIONS IS 400'. MAXIMUM ALLOWABLE MANHOLE SPACING FOR SEWER LINES WITH HORIZONTAL CURVATURE SHALL BE 300 FEET. A MANHOLE SHALL BE LOCATED AT THE PC AND PT OF THE CURVE.
3. ALL MANHOLES SHALL HAVE A 30" OPENING. THERE SHALL BE A MINIMUM OF 0.10 FEET IN FLOW LINE DROP AT EACH MANHOLE.
4. WHERE SEWER LINES ENTER THE MANHOLE HIGHER THAN 24 INCHES ABOVE THE MANHOLE INVERT, THE INVERT SHALL BE FILLED TO PREVENT SOLIDS DEPOSITION. A DROP PIPE SHALL BE PROVIDED FOR A SEWER LINE ENTERING A MANHOLE MORE THAN 18 INCHES ABOVE THE INVERT. IF THE DROP PIPE IS INSIDE THE MANHOLE, A MINIMUM OF 48 INCHES OF CLEAR SPACE SHALL BE MAINTAINED AND THE DROP SHALL BE PERMANENTLY AFFIXED TO THE WALL OF THE MANHOLE.
5. MANHOLES 10 FEET DEEP SHALL BE A MINIMUM OF 60-INCH DIAMETER AT THE FLOW LINE AND ECCENTRIC WITH ONE VERTICAL WALL.
6. WHEN ECCENTRIC CONES ARE SPECIFIED, THE VERTICAL WALL SHALL BE ALIGNED WITH THE OUTGOING (DOWNSTREAM) PIPE.
7. PIPE MATERIAL SHALL BE AS FOLLOWS:
 - FOR PIPE 6" THROUGH 15" DIAMETER LESS THAN 10' DEEP: USE ASTM D3034 SDR-35 PVC.
 - FOR PIPE 6" THROUGH 15" DIAMETER MORE THAN 10' DEEP: USE ASTM D3034 SDR-26 PVC.
 - FOR PIPE 16" DIAMETER AND LARGER LESS THAN 10' DEEP: USE ASTM F679 SDR-35 (PS 46) PVC.
 - FOR PIPE 16" DIAMETER AND LARGER MORE THAN 10' DEEP: USE ASTM F679 SDR-26 (PS 115) PVC.
8. THE INTERIOR OF ALL WASTEWATER MANHOLES SHALL BE COATED WITH AN APPROVED CORROSION-RESISTANT EPOXY COATING SUCH AS RAVEN 405, SPRAYROQ, NUKOTE AEGIS LINING SYSTEMS, SEWPERCOAT, WARREN EPOXY OR AN APPROVED EQUAL. EPOXY COATING IS NOT REQUIRED FOR MANHOLES LESS THAN 10' DEEP THAT ARE CONSTRUCTED WITH CONSHIELD OR PENETRON BIOMIC SOLUTIONS AEM5772 ADMIXTURES AND CAN BE IDENTIFIED WITH RED TINT. EXISTING MANHOLES THAT ARE ADJUSTED OR CONNECTED TO SHALL BE RECOATED WITH AN APPROVED EPOXY COATING AS NEEDED. NUMBER AND THICKNESS OF COATINGS SHALL BE AS RECOMMENDED BY THE MANUFACTURER.
9. ALL TESTING SHALL CONFORM TO THE LATEST EDITION OF THE STANDARD SPECIFICATIONS FOR PUBLIC WORKS CONSTRUCTION PUBLISHED BY THE NORTH CENTRAL TEXAS COUNCIL OF GOVERNMENTS (NCTCOG).
10. ALL WASTEWATER LINES SIX (6) INCHES OR LARGER SHALL BE AIR AND MANDREL TESTED, UPON COMPLETION OF FRANCHISE UTILITIES. TELEVISION INSPECTION SHALL ALSO BE REQUIRED WITH MANDREL SHOWN ON VIDEO. ALONG WITH THE PUBLIC WASTEWATER LINES, ALL PRIVATE SEWER LINES WILL BE TESTED PER THE SAME PROCEDURES WITH AN INSPECTOR PRESENT.
11. ALL FORCE MAINS SHALL BE HYDROSTATICALLY TESTED.
12. ALL WASTEWATER MANHOLES SHALL BE VACUUM TESTED, INCLUDING EXISTING SANITARY SEWER MANHOLES THAT ARE ADJUSTED OR CONNECTED TO.
13. SEWER LINES 12 INCHES AND LARGER WILL REQUIRE AN AS-BUILT SURVEY FOR COMPARISON TO THE DESIGN. THE TOLERANCES ALLOWED ARE AS FOLLOWS:
 - FLOW LINE: $\pm 0.10'$ FROM THE DESIGN
 - PERCENT SLOPE: $\pm 0.10\%$ OF THE DESIGN SLOPE
 - MINIMUM ALLOWABLE SLOPES: AS DEFINED BY TCEQ.
14. THE CITY ENGINEER SHALL BE NOTIFIED A MINIMUM OF 48 HOURS IN ADVANCE OF CONSTRUCTION OF ANY AND ALL PUBLIC IMPROVEMENTS.
15. A PLUG WILL BE INSTALLED IN THE CLOSEST DOWNSTREAM MANHOLE TO THE TIE-IN LOCATION. THE PLUG WILL BE REMOVED ONLY AFTER ALL PUBLIC IMPROVEMENTS HAVE BEEN COMPLETED AND PASSED TESTING.
16. DENSITY TESTING FOR UTILITY BACKFILL SHALL BE PERFORMED PER TXDOT STANDARD SPECIFICATIONS FOR CONSTRUCTION AND MAINTENANCE OF STREETS, HIGHWAYS, AND BRIDGES ITEM 132.
17. PUBLIC WORKS SHALL TV TEST ALL SEWER LATERALS. ANY RE-TV TESTING REQUIRED WILL INCUR A FEE OF \$50 PER LATERAL.

M* - CITY OF MELISSA REVISION

GENERAL CONSTRUCTION WASTEWATER NOTES		NCTCOG STANDARD SPECIFICATION REFERENCE	
		500	
CITY OF MELISSA, TEXAS	NOTICE DATE 06/14/24	MODIFIED DATE 06/14/24	STANDARD DRAWING NO. 5001M*
		APPLIED DATE 06/14/24	ENFORCED DATE 07/14/24



NOTES:

1. THE CONTRACTOR SHALL FURNISH AND INSTALL THE STEEL POST AND MOUNT THE SIGN ON THE POST.
2. THE SIGN SHALL HAVE BLACK LETTERING ON AN ORANGE BACKGROUND.
3. POST SIGNS SHALL BE MOUNTED WITH TWO 1/4" MACHINE BOLTS, LOCK WASHERS AND HEX NUTS.
4. SIGNS SHALL BE PLACED AT BOTH SIDES OF HIGHWAYS, ROADS OR RAILROAD CROSSINGS WHICH EVER THE CASE MAY BE.

M* - CITY OF MELISSA REVISION

WASTEWATER MARKER SIGN



NCTCOG STANDARD SPECIFICATION REFERENCE

N/A

CITY OF MELISSA, TEXAS

DATE
11/06/03

STANDARD DRAWING NO.
5002M*

TELEVISION REPORT ON SANITARY SEWERS

A. THE CONTRACTOR WILL PROVIDE A DIGITAL FILE AND SUITABLE LOG OF INSPECTION PERFORMED BY EXPERIENCED PERSONNEL ON A CLOSED CIRCUIT COLOR TELEVISION (ACCURATE FOOTAGE DISPLAYED ON VIDEO).

B. ALL PERTINENT DATA RECORDED IN AUDIO ON THE MEDIA TO INCLUDE:

1. DATE AND TIME OF RECORDING
2. CONTRACTOR'S NAME, PROJECT NAME, AND CONTRACT NUMBER
3. NAME OF THE COMPANY PERFORMING THE TELEVISION INSPECTION AND THE NAME OF THE OPERATOR
4. LOCATION, DESIGNATION, AND SIZE OF THE MAIN AND THE DIRECTION OF THE TEST
5. EVERY 50-FOOT STATION
6. STATION OF EACH MANHOLE
7. LOCATION AND STATION OF DEFICIENCIES IN ACCORDANCE WITH PACP AS DEFINED BY NASSCO
8. LOCATION AND DIRECTION OF ENTRY OF LATERALS


C. PVC PIPE SHALL HAVE A DEFLECTION TEST USING A 5% (GO NO GO) TEST MANDREL OF APPROPRIATE SIZE WHICH SHALL BE VISIBLE ON VIDEO AT ALL TIMES. MANDREL SHALL STAY 30 FEET IN FRONT OF THE CAMERA AT ALL TIMES.

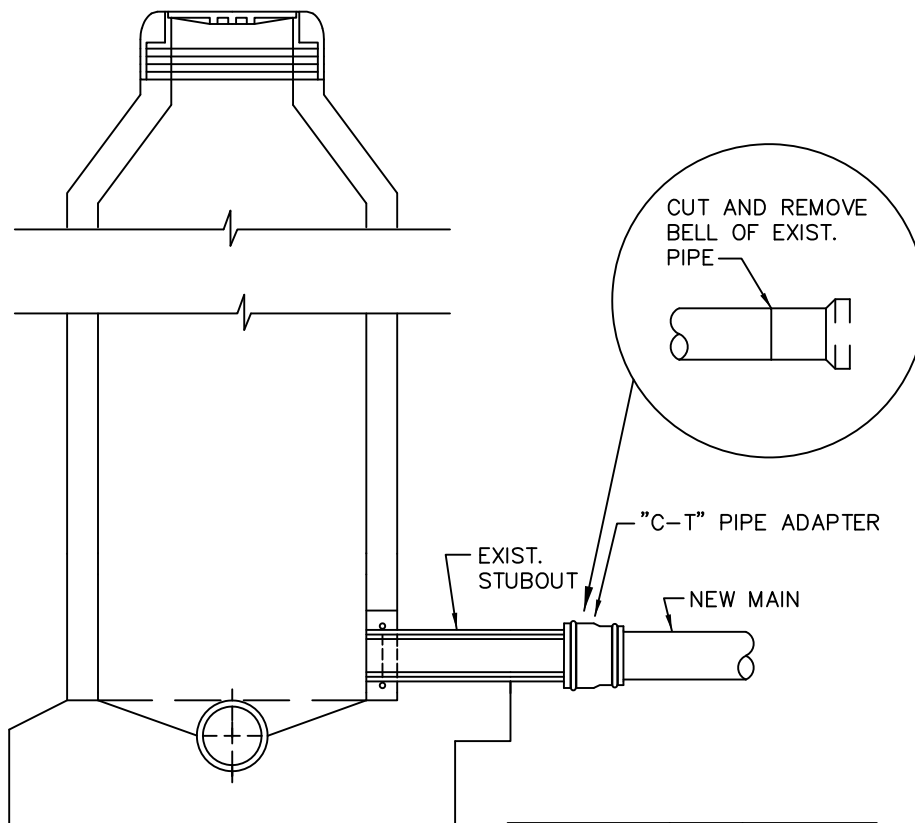
D. THE CONTRACTOR WILL ALSO PROVIDE A WRITTEN TELEVISION REPORT (INDICATING MANHOLE NUMBERS) THAT WILL ACCOMPANY THE VIDEO RECORDING. THIS WRITTEN REPORT MUST INCLUDE:

1. MANHOLE NUMBERS (THESE NUMBERS MUST MATCH MANHOLE NUMBERS ON "AS BUILT" DRAWINGS).
2. SERVICE CONNECTION LOCATIONS RIGHT OR LEFT.
3. REFERENCE TO SERVICE CONNECTION LOCATIONS OUT OF MANHOLES.
4. LOCATIONS OF SUSPECTED AND OBVIOUS DEFICIENCIES (i.e. BAD JOINTS, BREAKS, OR LEAKS, ETC).
5. DEPTH OF EACH MANHOLE.
6. ACTUAL MEASURED DISTANCE (ON GROUND) BETWEEN MANHOLES.

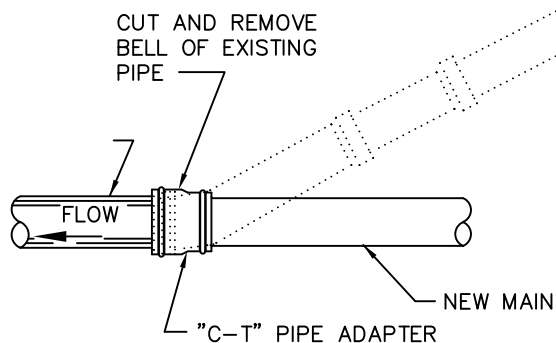
E. ALL VISUAL AND TELEVISION INSPECTIONS SHALL BE COMPLETED AND APPROVED BY THE CITY INSPECTOR FROM THE CITY OF MELISSA ENGINEERING DEPARTMENT PRIOR TO PLACING OF ANY PAVEMENT. AN INSPECTOR FROM THE MELISSA ENGINEERING DEPARTMENT MUST WITNESS THE RECORDING. THE ENGINEERING DEPARTMENT SHALL BE NOTIFIED AT LEAST 48 HOURS IN ADVANCE FOR SCHEDULING. TELEVISION RECORDINGS MUST CLEARLY SHOW DETAILS OF STRUCTURAL DEFECTS, MISALIGNMENTS AND INFILTRATION. ALL KNOWN OR INDICATED BREAKS SHALL BE REPAIRED BY THE CONTRACTOR, REGARDLESS OF THE TEST ALLOWANCES. FAULTY SECTIONS OF SEWER LINES OR MANHOLES REJECTED BY THE ENGINEER SHALL BE REMOVED AND RELAID BY THE CONTRACTOR. SUNKEN MANHOLES WILL NOT BE ACCEPTED. ALL MANHOLE INVERTS MUST BE COMPLETED PRIOR TO VIDEO RECORDING.

M * - CITY OF MELISSA REVISION

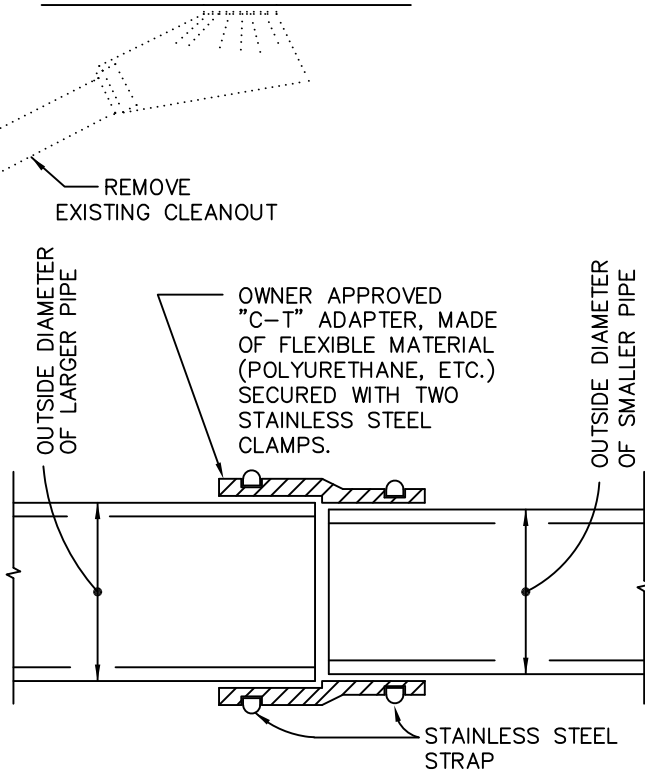
TELEVISION REPORT SPECIFICATION		NCTCOG STANDARD SPECIFICATION REFERENCE 507.5	
		MODIFIED DATE 5/22/19	STANDARD DRAWING NO. 5003M*
CITY OF MELISSA, TEXAS	NOTICE DATE 7/11/19	APPLIED DATE 7/11/19	ENFORCED DATE 8/11/19



AT STUBOUT
N.T.S.



AT CLEANOUT
N.T.S.



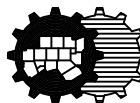
"C-T" PIPE ADAPTER
N.T.S.

NOTE:

THIS DETAIL FOR USE ONLY WHEN NEW MAIN WILL NOT MATE WITH EXISTING MAIN JOINT DUE TO DIFFERENT DIMENSIONS OR MATERIALS AND A MANHOLE IS NOT REQUIRED.

WASTEWATER MAIN TIE-IN
AT CLEANOUT OR M.H. STUBOUT

North Central Texas Council of Governments



STANDARD SPECIFICATION REFERENCE

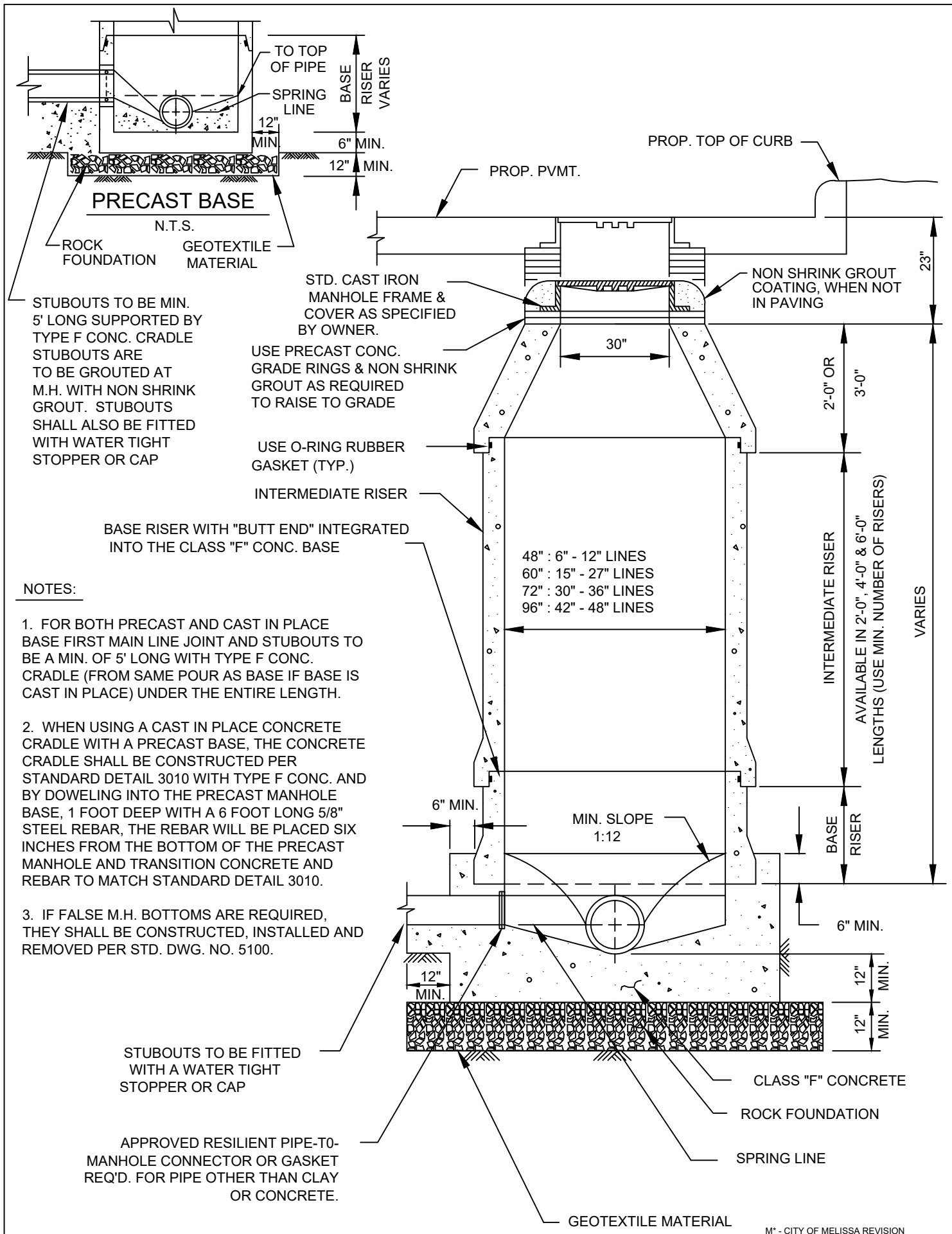
502.10

DATE

AUG '23

STANDARD DRAWING NO.

5010



WASTEWATER MANHOLE

PRECAST



NCTCOG STANDARD SPECIFICATION REFERENCE

502.1

DATE

11/13/08

STANDARD DRAWING NO.

5020M*

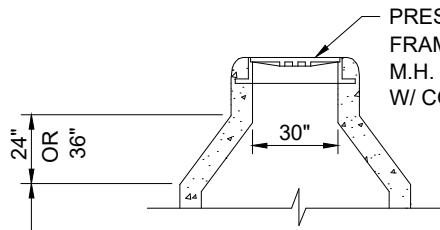


CONCRETE CONE

ROOF OPTIONS

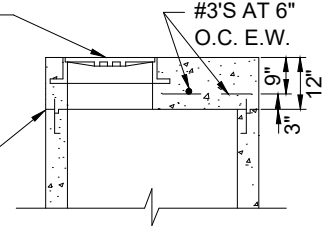
REINFORCED CONCRETE
SLAB

N.T.S.



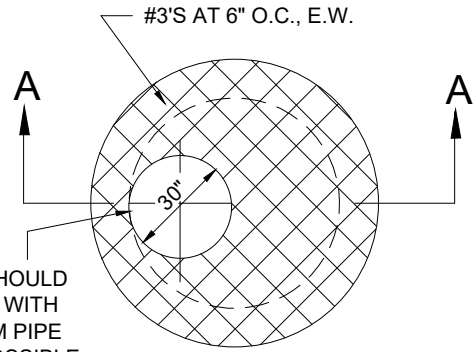
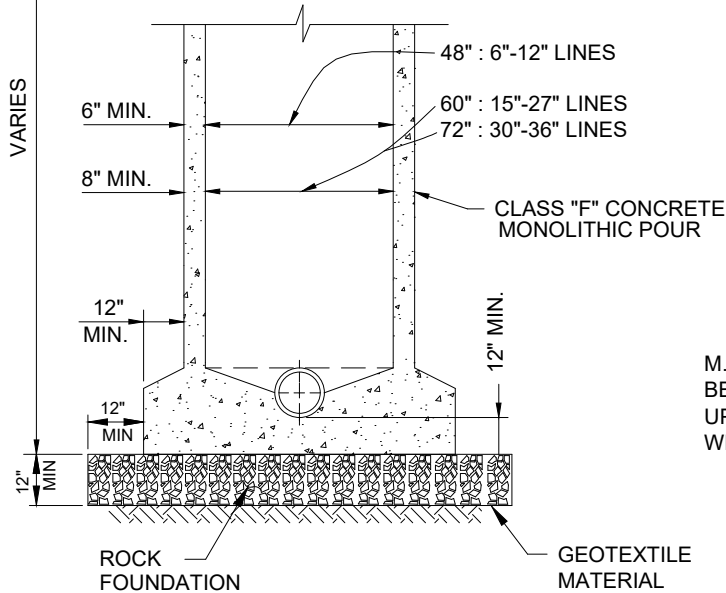
FOR 5' & 6' DIA. M.H.'S
SEE TRANSITION DETAIL

CONSTRUCTION JOINT WITH
KEY WAY WATERSTOP, AND
#3'S AT 12" O.C. EXTENDING
9" INTO WALL (NOT REQ'D
FOR CONTINUOUS POUR)



SECTION A - A

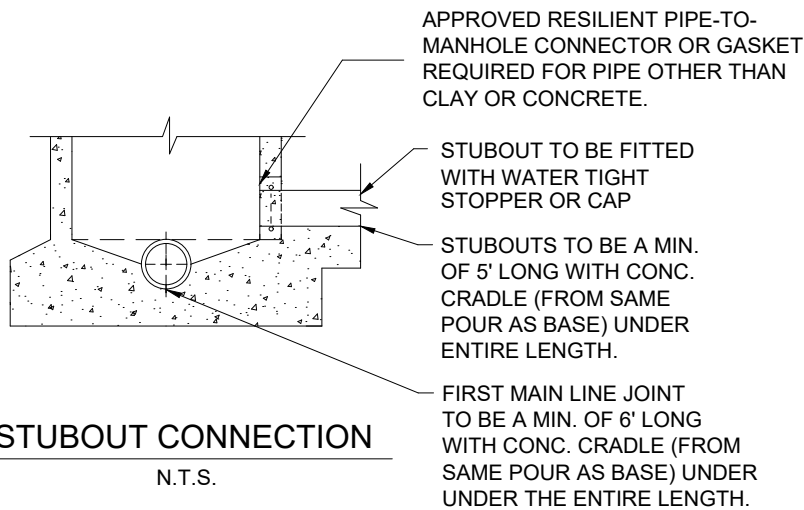
N.T.S.



M.H. LID SHOULD
BE IN LINE WITH
UPSTREAM PIPE
WHERE POSSIBLE

ROOF STEEL LAYOUT

N.T.S.



STUBOUT CONNECTION

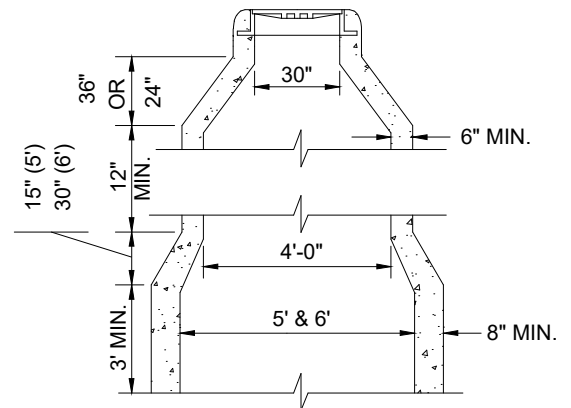
N.T.S.

APPROVED RESILIENT PIPE-TO-
MANHOLE CONNECTOR OR GASKET
REQUIRED FOR PIPE OTHER THAN
CLAY OR CONCRETE.

STUBOUT TO BE FITTED
WITH WATER TIGHT
STOPPER OR CAP

STUBOUTS TO BE A MIN.
OF 5' LONG WITH CONC.
CRADLE (FROM SAME
POUR AS BASE) UNDER
ENTIRE LENGTH.

FIRST MAIN LINE JOINT
TO BE A MIN. OF 6' LONG
WITH CONC. CRADLE (FROM
SAME POUR AS BASE) UNDER
THE ENTIRE LENGTH.



TRANSITION DETAIL FOR
5' & 6' DIA. M.H.'S

N.T.S.

M* - CITY OF MELISSA REVISION

WASTEWATER MANHOLE PRESSURE-TYPE



NOTICE DATE
06/14/24

NCTCOG STANDARD SPECIFICATION REFERENCE

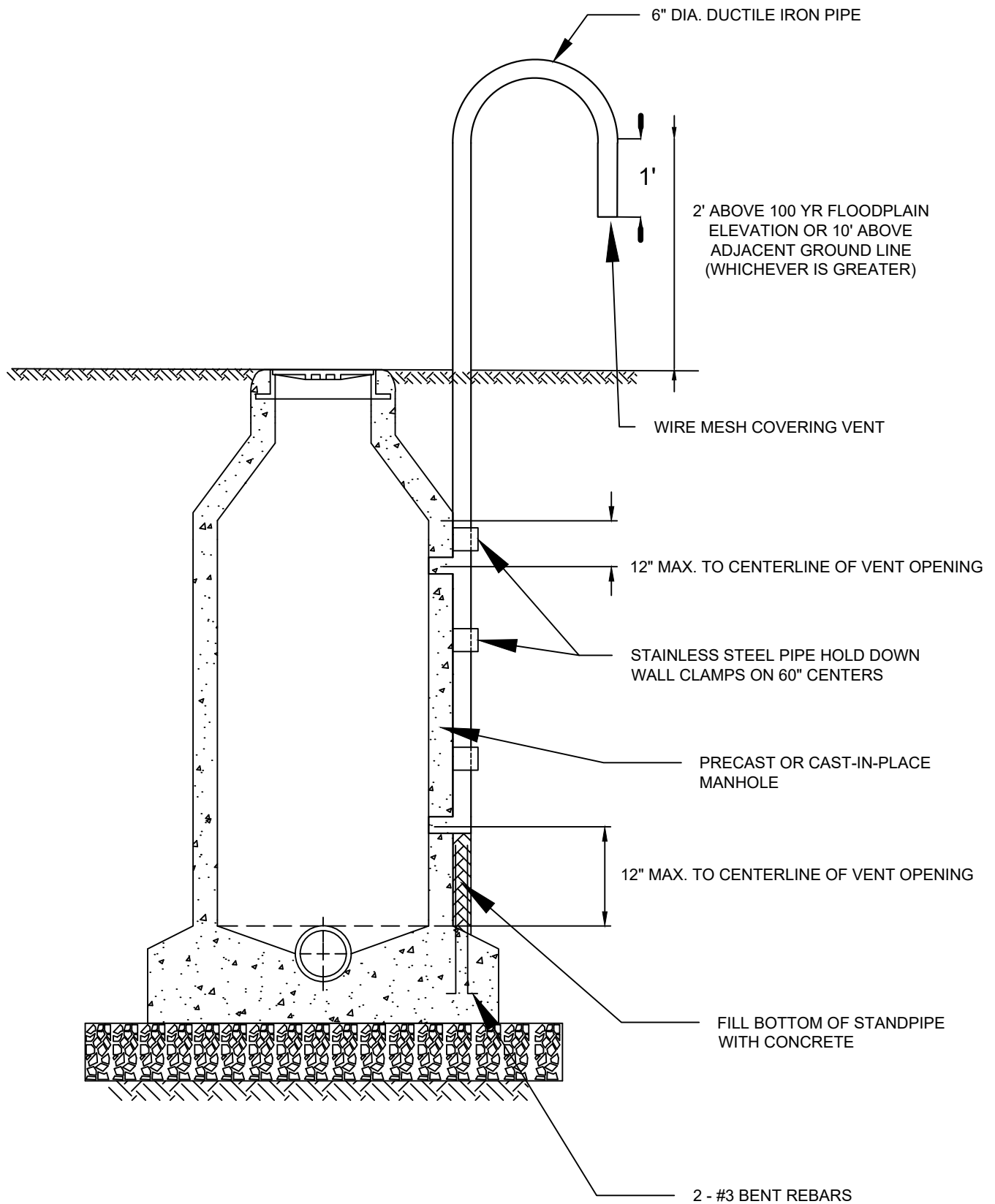
502.1

MODIFIED DATE
06/14/24


STANDARD DRAWING NO.
5050M*

APPLIED DATE
06/14/24

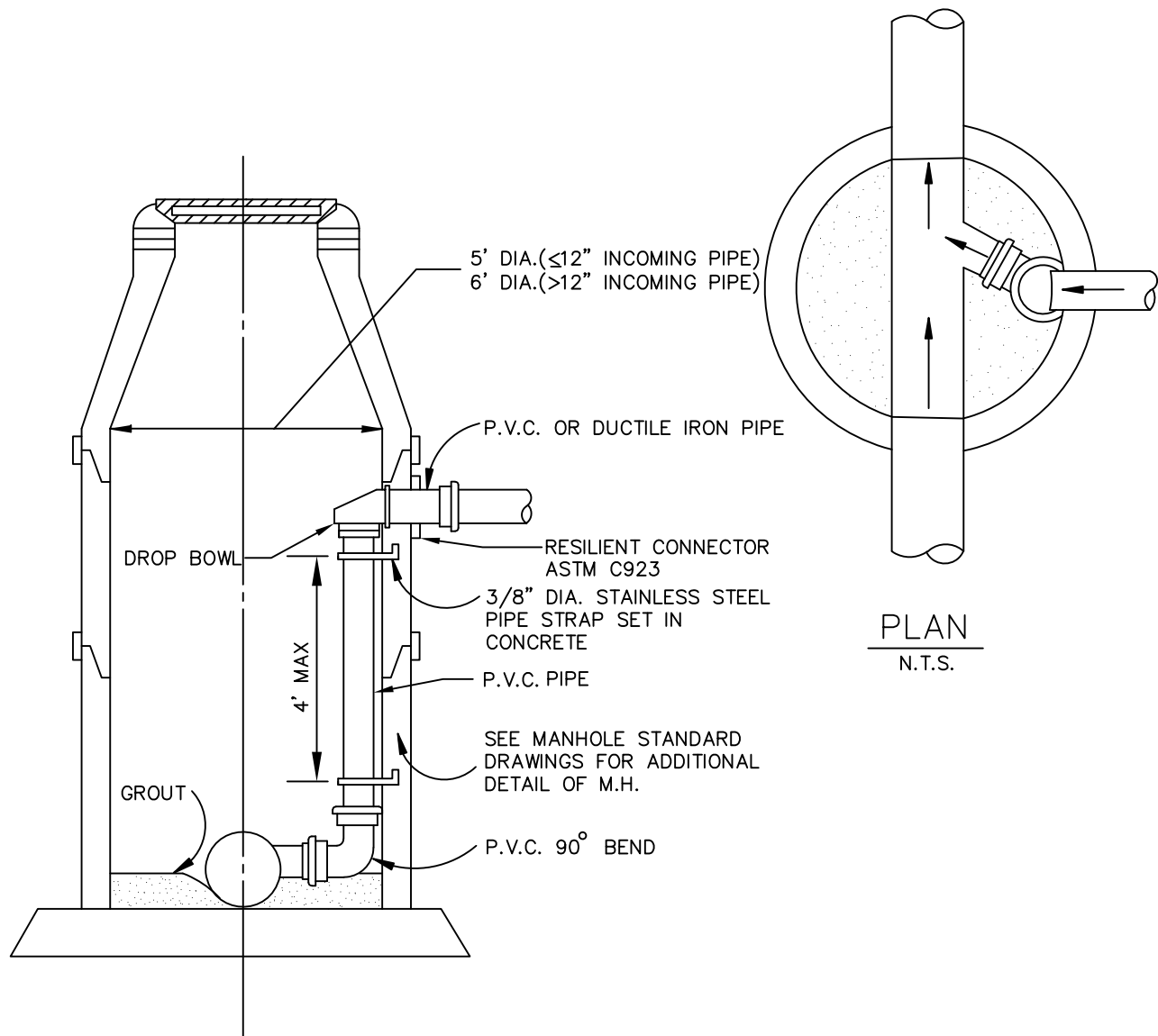
ENFORCED DATE
07/14/24



M* - CITY OF MELISSA REVISION

	NCTCOG STANDARD SPECIFICATION REFERENCE	
	500	
	MODIFIED DATE	STANDARD DRAWING NO.
NOTICE DATE	APPLIED DATE	ENFORCED DATE
06/28/16	07/28/16	07/28/16
	06/28/16	5060M*

WASTEWATER MANHOLE VENTED



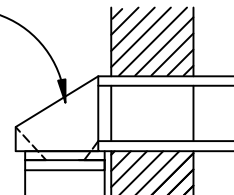
ELEVATION
N.T.S.

PLAN
N.T.S.

NOTE:

1. FLOW LINE OF SURCHARGE LINE NORMALLY PLACED AT TOP OF EXISTING WASTEWATER LINE UNLESS NOTED OTHERWISE ON PLANS.
2. MAXIMUM SPACING OF 4' ON PIPE STRAPS. 2 STRAPS MINIMUM. ALL STRAP PARTS SHALL BE STAINLESS STEEL.

REMOVE PORTION OF DROP PIPE TO CONNECT AS SHOWN



WEIR DETAIL
N.T.S.

WASTEWATER MANHOLE

INSIDE DROP CONNECTION

North Central Texas Council of Governments



STANDARD SPECIFICATION REFERENCE

502.1

DATE

AUG '23

STANDARD DRAWING NO.

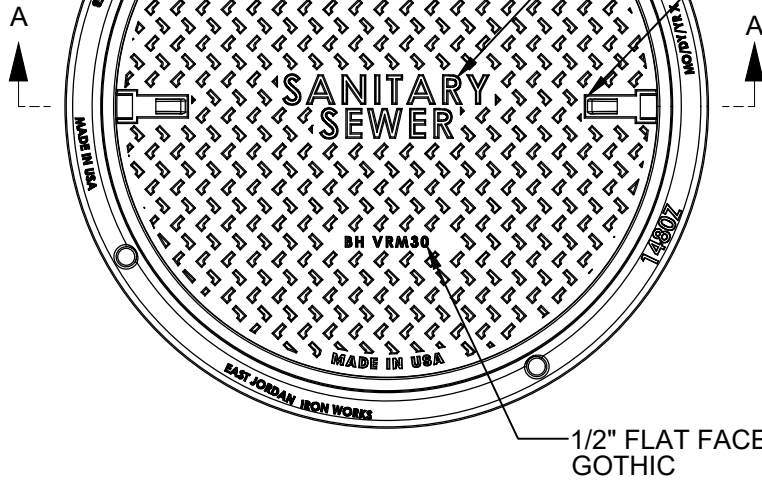
5080

(4) 1" DIA BOLT HOLES
ON A 35 1/2" DIA B.C.

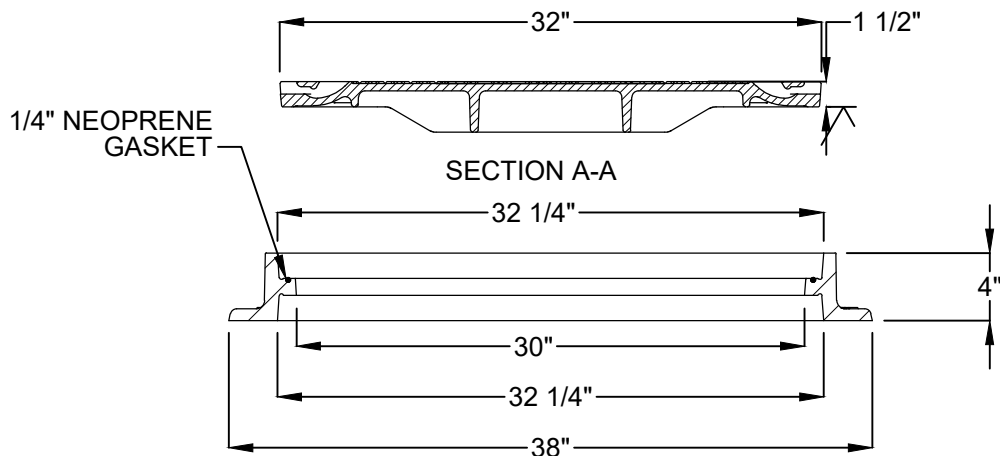
1" FLAT FACE
GOTHIC

1 1/2" FLAT FACE
GOTHIC

(2) CAST PICKBARS



COVER SECTION



FRAME SECTION

NOTES:

1. MANHOLE FRAME AND COVER TO BE APPROVED BY CITY OF MELISSA PRIOR TO PURCHASE.
2. A WATERTIGHT RING AND SEALED COVER (DETAIL 5085BM) SHALL BE USED IN AREAS SUBJECT TO WATER INTRUSION, IN 100-YEAR FLOOD PLAINS, AND FOR ALL FORCE MAIN CONNECTIONS.
3. ALL MANHOLE COVERS SHALL HAVE "SANITARY SEWER" AND "CITY OF MELISSA" STAMPED.

LIST OF ACCEPTABLE WASTEWATER MANHOLE
RING & COVERS

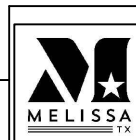
32" DIAMETER COVERS:

BASS & HAYES VRM30
NEENAH FOUNDRY R-931 GASKETED LID

M* - CITY OF MELISSA REVISION

NCTCOG STANDARD SPECIFICATION REFERENCE

502.1



NOTICE DATE
11/17/17

MODIFIED DATE
7/2/18

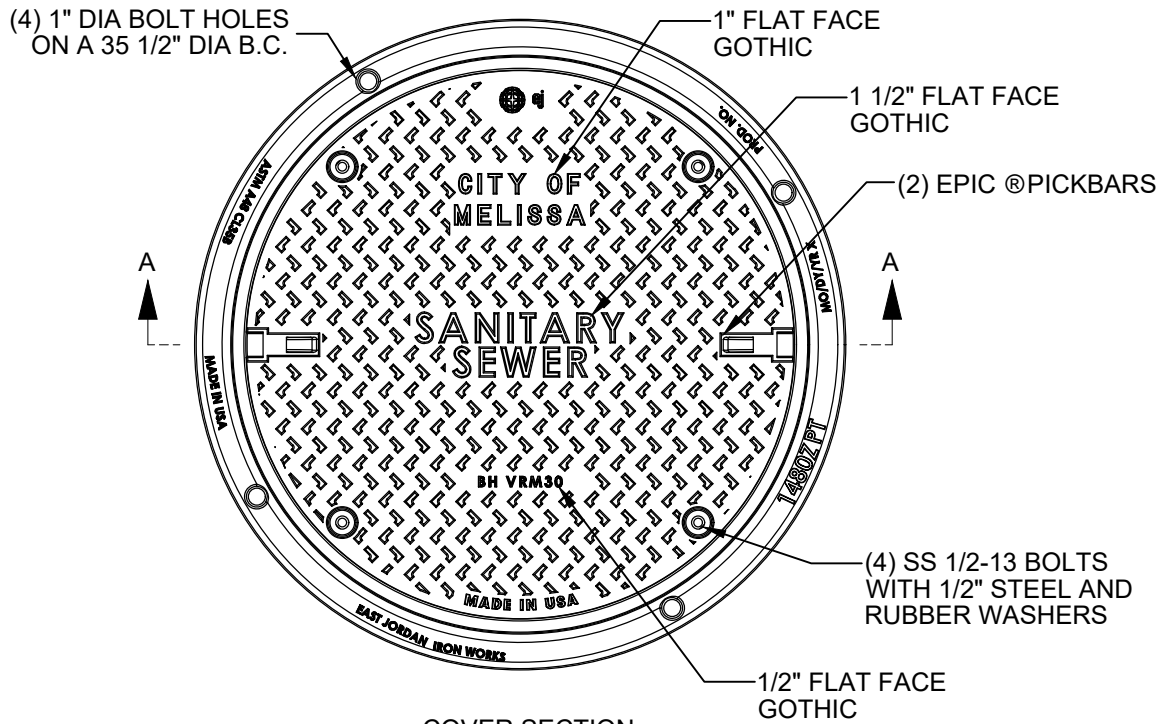
ADOPTED DATE
11/17/17

STANDARD DRAWING NO.
5085AM*

ENFORCEMENT DATE
12/17/17

WASTEWATER MANHOLE RING & COVER

LOOSE FIT



NOTES:

1. MANHOLE FRAME AND COVER TO BE APPROVED BY CITY OF MELISSA PRIOR TO PURCHASE.
2. A WATERTIGHT RING AND SEALED COVER (DETAIL 5085BM) SHALL BE USED IN AREAS SUBJECT TO WATER INTRUSION, IN 100-YEAR FLOODPLAINS, AND FOR ALL FORCE MAIN CONNECTIONS.
3. ALL MANHOLE COVERS SHALL HAVE "SANITARY SEWER" AND "CITY OF MELISSA" STAMPED.

LIST OF ACCEPTABLE WASTEWATER MANHOLE RING & COVERS

32" DIAMETER COVERS:

BASS & HAYES VRM30
NEENAH FOUNDRY R-1931 BOLTED & GASKETED LID

M* - CITY OF MELISSA REVISION

NCTCOG STANDARD SPECIFICATION REFERENCE
502.1



NOTICE DATE

MODIFIED DATE
7/2/18

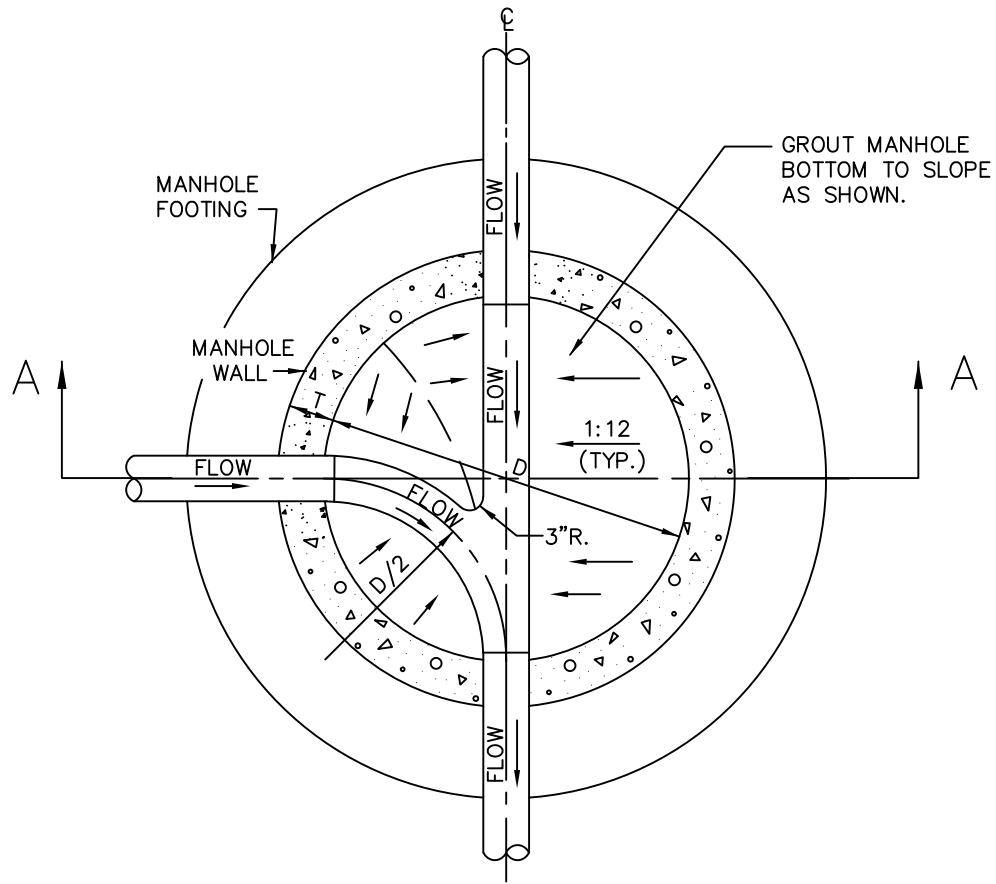
ADOPTED DATE

STANDARD DRAWING NO.
5085BM*

ENFORCEMENT DATE

WASTEWATER MANHOLE RING & COVER

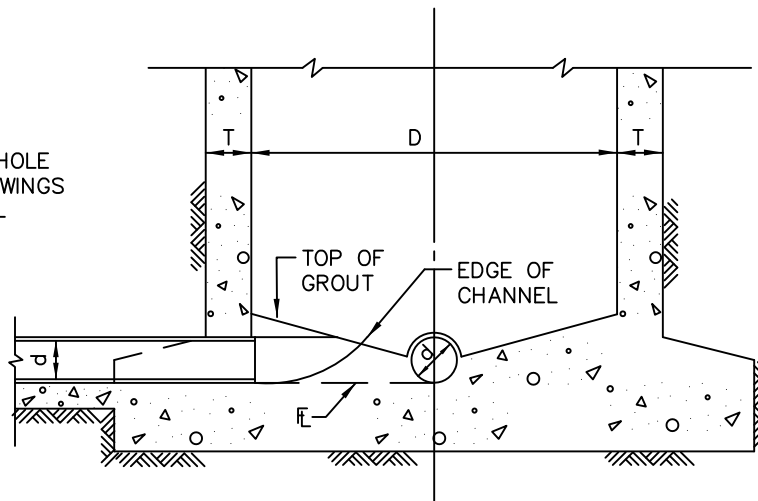
WATERTIGHT



PLAN
N.T.S.

T = WALL THICKNESS
D = MANHOLE DIAMETER
d = PIPE DIAMETER

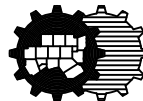
NOTE:
REFER TO MANHOLE
STANDARD DRAWINGS
FOR ADDITIONAL
DETAIL OF M.H.



SECTION A-A
N.T.S.

WASTEWATER MANHOLE INVERT DETAIL

North Central Texas Council of Governments

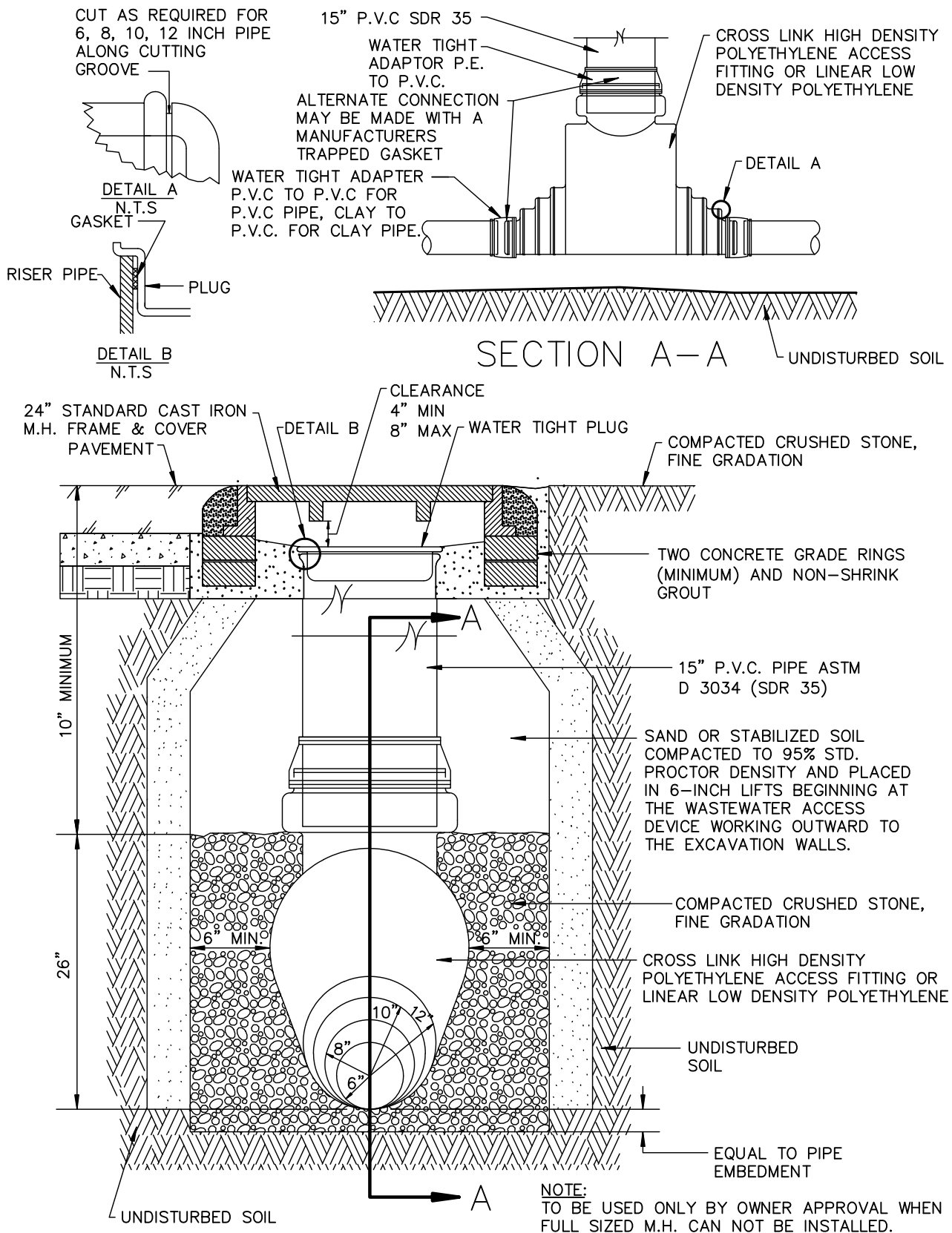


STANDARD SPECIFICATION REFERENCE

502.1

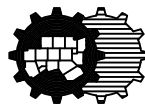
DATE
AUG '23

STANDARD DRAWING NO.
5090



WASTEWATER ACCESS DEVICE

North Central Texas Council of Governments



STANDARD SPECIFICATION REFERENCE

502.1

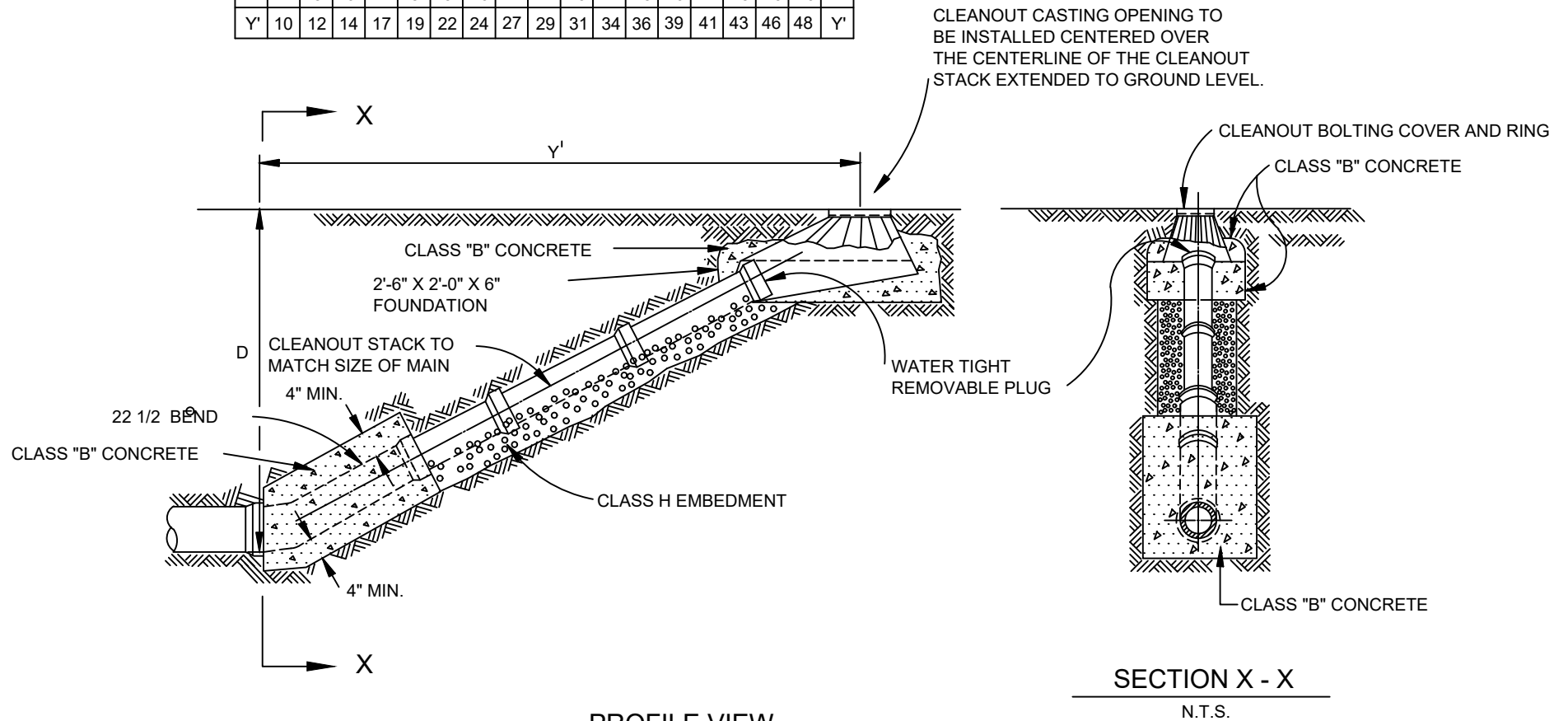
DATE

AUG '23

STANDARD DRAWING NO.

5100

D	4	5	6	7	8	9	10	11	12	13	14	15	16	17	18	19	20	D
Y'	10	12	14	17	19	22	24	27	29	31	34	36	39	41	43	46	48	Y'



NOTE:

IF CLEANOUT IS OUTSIDE OF PAVEMENT,
CENTER CASTING IN 15"x15" CLASS "A"
CONCRETE PAD 4" THICK.

PROFILE VIEW

N.T.S.

SECTION X - X

N.T.S.

STANDARD DRAWING NO.
5110M
*

**WASTEWATER MAIN
CLEANOUT**



NOTICE DATE

M* - CITY OF MELISSA REVISION

NCTCOG STANDARD SPECIFICATION REFERENCE

502

MODIFIED DATE
2/21/14

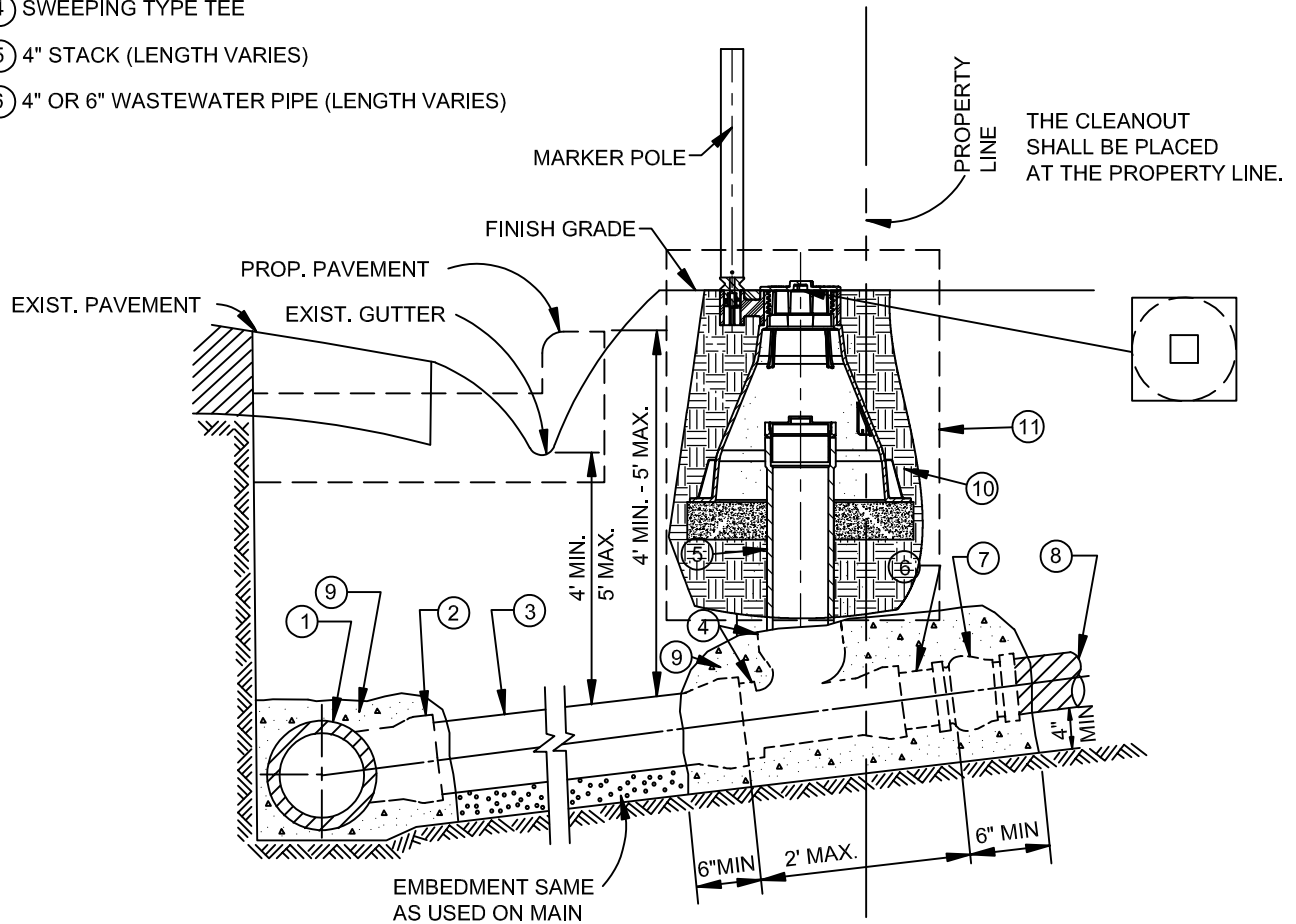
STANDARD DRAWING NO.
5110M*

APPLIED DATE

ENFORCED DATE

KEY:


- | | | |
|---|--------------------------|-------------------|
| ① WASTEWATER MAIN | ⑦ ADAPTER | ⑪ REFER TO NOTE 9 |
| ② 4" OR 6" SWEEPING TYPE TEE | ⑧ BUILDING SEWER LAT. | |
| ③ 6" WASTEWATER LAT. FOR COMMERCIAL OR
4" WASTEWATER LAT. FOR SINGLE FAMILY RES. | ⑨ CLASS "B" CONCRETE | |
| ④ SWEEPING TYPE TEE | ⑩ COMPACTED AS SPECIFIED | |
| ⑤ 4" STACK (LENGTH VARIES) | | |
| ⑥ 4" OR 6" WASTEWATER PIPE (LENGTH VARIES) | | |



NOTES:

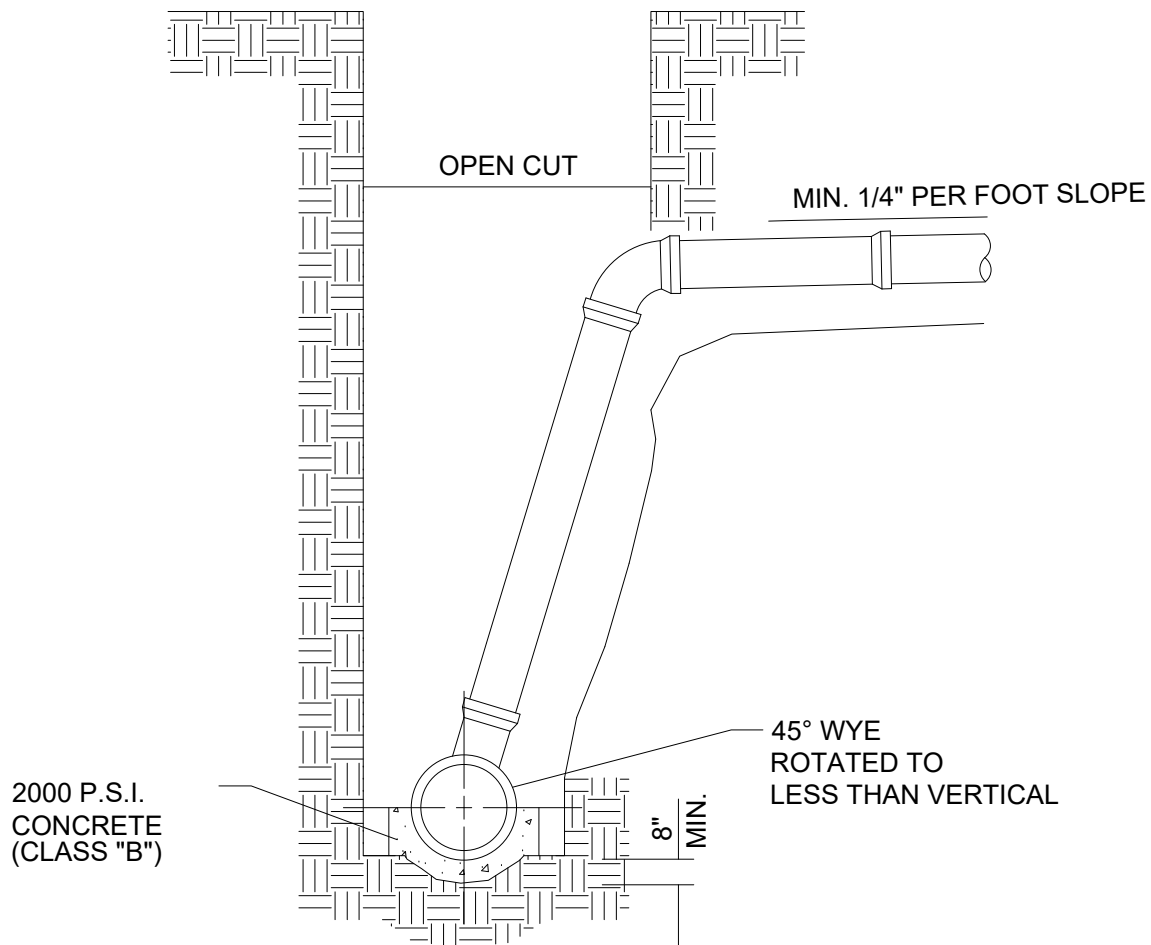
- CLEANOUT ENCLOSURE AND MARKER POLE BY UTILITY DEFENDER OR APPROVED EQUAL TO BE FURNISHED BY DEVELOPER/BUILDER FOR RESIDENTIAL AND FOR COMMERCIAL MAINLINE LATERALS.
- WASTEWATER LATERAL SHALL BE SDR 35 PVC PIPE.
- SLOPE OF LATERAL TO BE 1% MIN., 2% MAX. UNLESS INSTRUCTED OTHERWISE BY OWNER.
- THE WASTEWATER LATERAL SHALL BE CONNECTED TO BUILDING LATERAL AND CONSTRUCTED IN SUCH MANNER AS TO CLEAR EXISTING UTILITIES AND PROPOSED FACILITIES SUCH AS STORM SEWER MAINS, PAVING, SIDEWALKS, RETAINING WALLS, ETC. VERTICAL BENDS (22.5° MAX.) MAY BE USED IF APPROVED BY OWNER.
- THE MAINLINE LATERAL CONNECTION TO THE PRIVATE BUILDING LATERAL SHALL BE AS CLOSE TO THE PROPERTY LINE AS POSSIBLE.
- INSTALL 4" STOPPER OR CAP AT PROPERTY LINE IF BUILDING LATERAL DOES NOT EXIST.
- 4" FITTINGS TO BE USED FOR 4" LATERALS & 6" FITTINGS TO BE USED FOR 6" LATERALS. FOR SINGLE FAMILY RESIDENTIAL, 4" MIN. LATERALS REQUIRED.
- TYPICAL CLEANOUT STACK & CASTING SHALL BE PLACED AT THE PROPERTY LINE.
- REFER TO STANDARD DRAWING NO. 5123M AND NO. 5125M FOR THE NON TRAFFIC RATED CLEANOUT ENCLOSURE AND TRAFFIC RATED CLEANOUT ENCLOSURE DETAILS, RESPECTIVELY.

M* - CITY OF MELISSA REVISION

	NCTCOG STANDARD SPECIFICATION REFERENCE	
	500	
	MODIFIED DATE	STANDARD DRAWING NO.
	07/30/24	5120M*
NOTICE DATE	APPLIED DATE	ENFORCED DATE
08/01/24	08/01/24	09/01/24

WASTEWATER LATERALS

WITH & WITHOUT CLEANOUT



STACKED DEEP CUT

STACKED DEEP CUT LATERALS
SHALL NOT BE INSTALLED WITHOUT
VERIFICATION OF FLOW LINE ELEVATIONS
FOR EACH LOT AND WRITTEN APPROVAL
FROM THE ENGINEER.

M* - CITY OF MELISSA REVISION

STACKED DEEP CUT LATERALS

CITY OF MELISSA, TEXAS



NCTCOG STANDARD SPECIFICATION REFERENCE

500

DATE

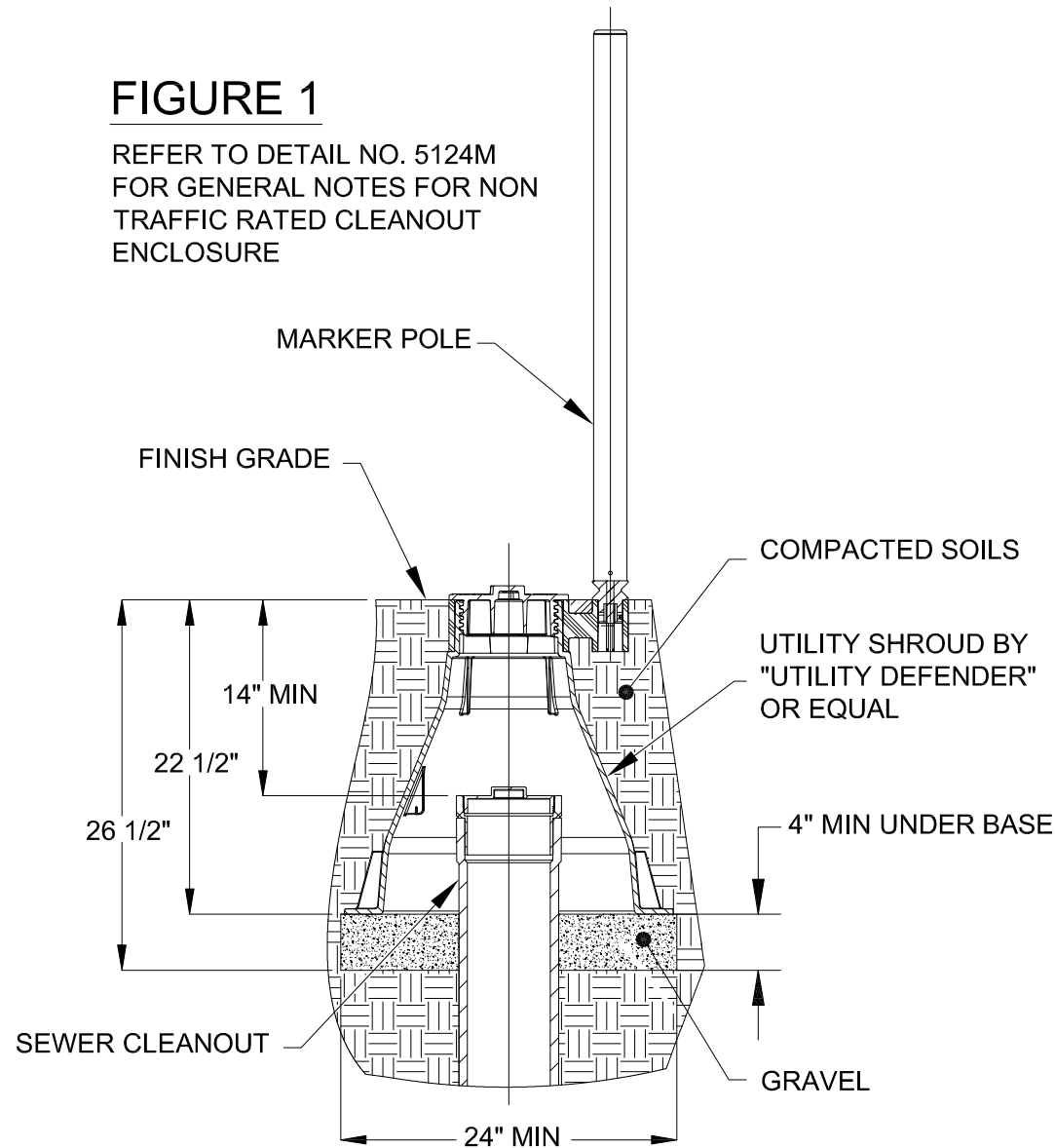
11/13/08

STANDARD DRAWING NO.

5121M*

FIGURE 1

REFER TO DETAIL NO. 5124M
FOR GENERAL NOTES FOR NON
TRAFFIC RATED CLEANOUT
ENCLOSURE



M* - CITY OF MELISSA REVISION

NON TRAFFIC RATED CLEANOUT ENCLOSURE ASSEMBLY

CITY OF MELISSA, TEXAS



NCTCOG STANDARD SPECIFICATION REFERENCE

500

DATE

07/30/24

STANDARD DRAWING NO.

5123M*

NON TRAFFIC RATED APPLICATION NOTES

- 1. SEE FIGURE 1; UTILITY SHROUD FOR SEWER CLEANOUT ASSEMBLY NON TRAFFIC RATED APPLICATIONS.
- 2. EXCAVATE A 24" MINIMUM DIAMETER HOLE CONCENTRICALLY AROUND SEWER CLEANOUT TO A DEPTH OF 26 1/2" BELOW FINISH GRADE.
- 3. INSTALL A 4" LAYER OF GRAVEL BEDDING TO CREATE THE INSTALLATION SURFACE FOR THE UTILITY SHROUD.
- 4. THE FINISH GRADE TO THE TOP OF THE GRAVEL SURFACE SHALL BE 22 1/2".
- 5. INSTALL CLEANOUT CAP ON SEWER PIPE AT 14" MINIMUM DOWN FROM FINISH GRADE.
- 6. SET UTILITY SHROUD ON GRAVEL SURFACE CENTERED AROUND SEWER CLEANOUT.
- 7. SECURE MARKER POLE INTO UTILITY SHROUD COLLAR USING THE PROVIDED HARDWARE.
- 8. PLACE COLLAR WITH MOUNTED MARKER POLE ONTO UTILITY SHROUD AND INSTALL UTILITY SHROUD CAP.
- 9. BACKFILL HOLE AND COMPACT SOIL TO PREVENT UTILITY SHROUD MOVEMENT.
- 10. TOP OF COLLAR SHOULD BE AT FINISH GRADE FOR PROPER MARKER POLE OPERATION.
- 11. UPON COMPLETION OF PROJECT, UNSCREW CAP, REMOVE COLLAR AND MARKER POLE ASSEMBLY, AND REINSTALL CAP.

M* - CITY OF MELISSA REVISION

NON TRAFFIC CLEANOUT ENCLOSURE ASSEMBLY NOTES

CITY OF MELISSA, TEXAS



NCTCOG STANDARD SPECIFICATION REFERENCE

500

DATE

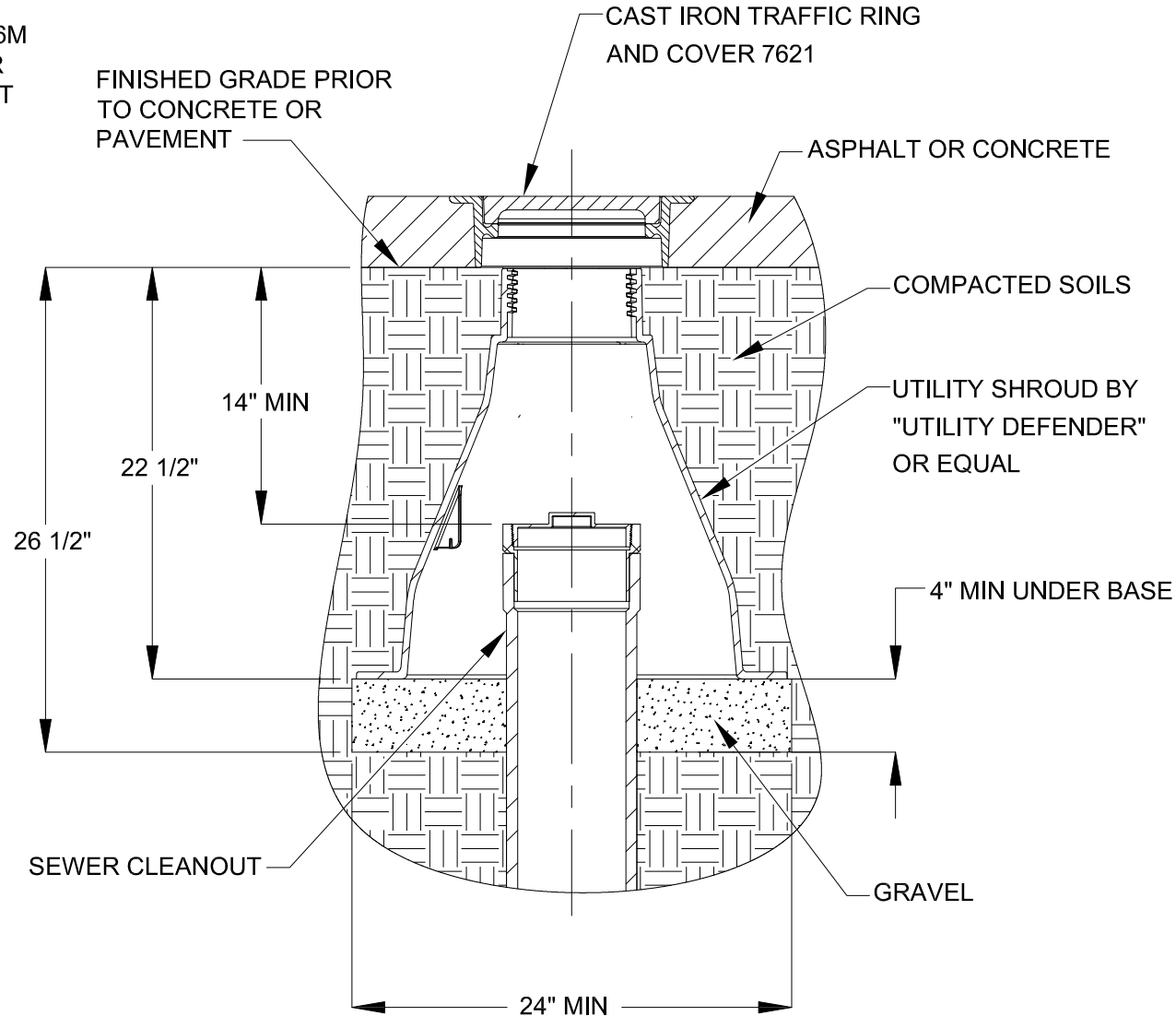
07/30/24

STANDARD DRAWING NO.

5124M*

FIGURE 2

REFER TO DETAIL NO. 5126M
FOR GENERAL NOTES FOR
TRAFFIC RATED CLEANOUT
ENCLOSURE



M* - CITY OF MELISSA REVISION

TRAFFIC RATED CLEANOUT ENCLOSURE ASSEMBLY

CITY OF MELISSA, TEXAS



NCTCOG STANDARD SPECIFICATION REFERENCE

500

DATE

07/30/24

STANDARD DRAWING NO.

5125M*

TRAFFIC RATED APPLICATION NOTES

1. SEE FIGURE 2; UTILITY SHROUD FOR SEWER CLEANOUT ASSEMBLY TRAFFIC RATED APPLICATIONS.
2. EXCAVATE A 24" MINIMUM DIAMETER HOLE CONCENTRICALLY AROUND SEWER CLEANOUT TO A DEPTH OF 26 1/2" BELOW FINISH GRADE.
3. INSTALL A 4" LAYER OF GRAVEL BEDDING TO CREATE THE INSTALLATION SURFACE FOR THE UTILITY SHROUD.
4. THE FINISH GRADE TO THE TOP OF THE GRAVEL SURFACE SHALL BE 22 1/2".
5. INSTALL CLEANOUT CAP ON SEWER PIPE AT 14" MINIMUM DOWN FROM FINISH GRADE.
6. SET UTILITY SHROUD ON GRAVEL SURFACE CENTERED AROUND SEWER CLEANOUT.
7. SECURE MARKER POLE INTO UTILITY SHROUD COLLAR USING THE PROVIDED HARDWARE.
8. PLACE COLLAR WITH MOUNTED MARKER POLE ONTO UTILITY SHROUD AND INSTALL UTILITY SHROUD CAP.
9. BACKFILL HOLE AND COMPACT SOIL TO PREVENT UTILITY SHROUD MOVEMENT.
10. TOP OF COLLAR SHOULD BE AT FINISH GRADE FOR PROPER FLAG POLE OPERATION.
11. PRIOR TO PAVING, REMOVE CAP, COLLAR AND MARKER POLE ASSEMBLY. INSTALL CAST IRON TRAFFIC RING AND COVER 7621 OR EQUIVALENT CENTRALLY LOCATED ABOUT UTILITY SHROUD.

M* - CITY OF MELISSA REVISION

TRAFFIC CLEANOUT ENCLOSURE ASSEMBLY NOTES

CITY OF MELISSA, TEXAS



NCTCOG STANDARD SPECIFICATION REFERENCE

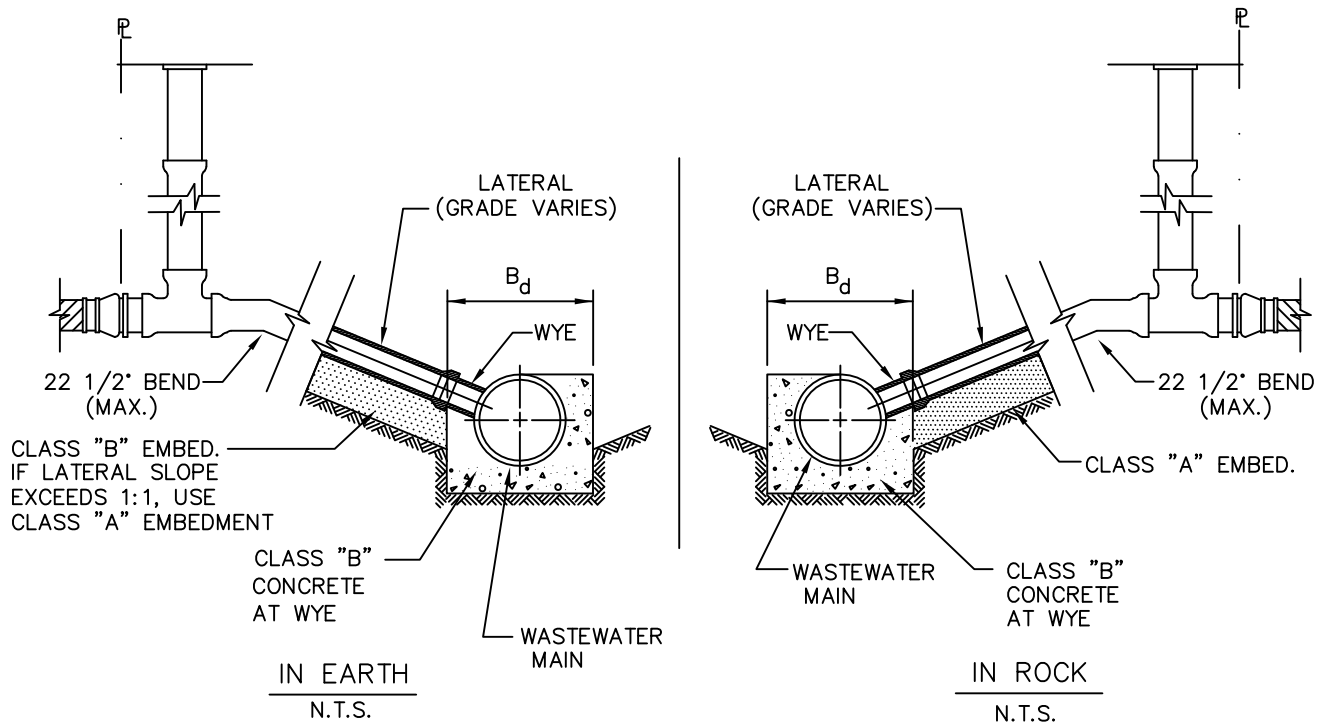
500

DATE

07/30/24

STANDARD DRAWING NO.

5126M*



TRENCH WITH SLOPING SIDES

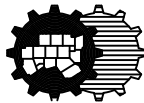
N.T.S.

NOTES:

1. WYE SHALL BE SUPPORTED AS SHOWN FOR WYE CONNECTION SUPPORT.
2. LATERALS ARE TO CLEAR ALL EXISTING UTILITIES. 11 1/4" OR 22 1/2" BEND, ONLY, MAY BE REQUIRED.

WASTEWATER LATERAL CONNECTIONS
IN EARTH & IN ROCK

North Central Texas Council of Governments

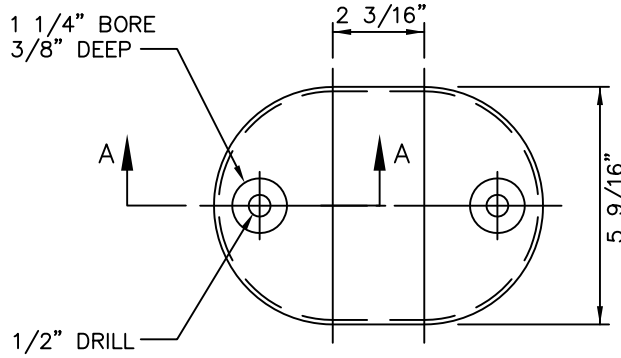


STANDARD SPECIFICATION REFERENCE

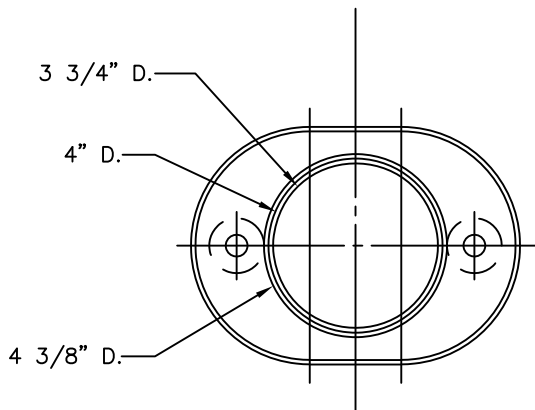
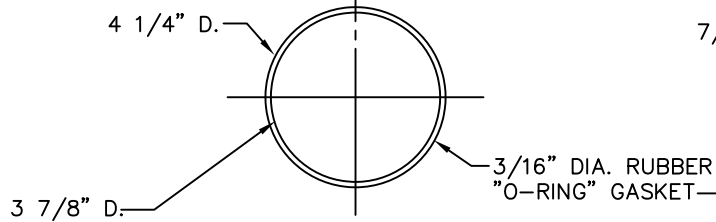
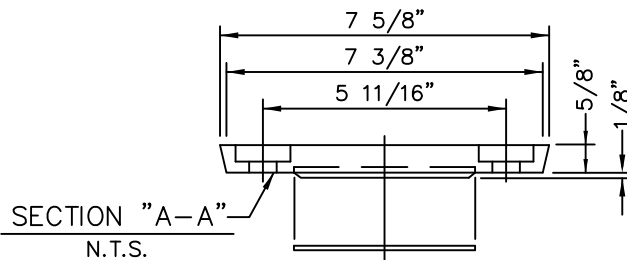
502.10

DATE
AUG '23

STANDARD DRAWING NO.
5130



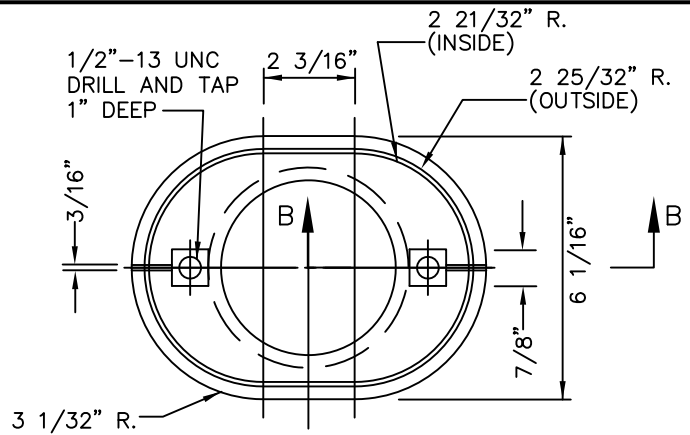
COVER
N.T.S.



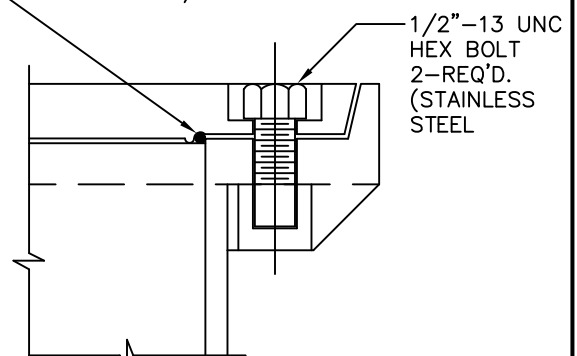
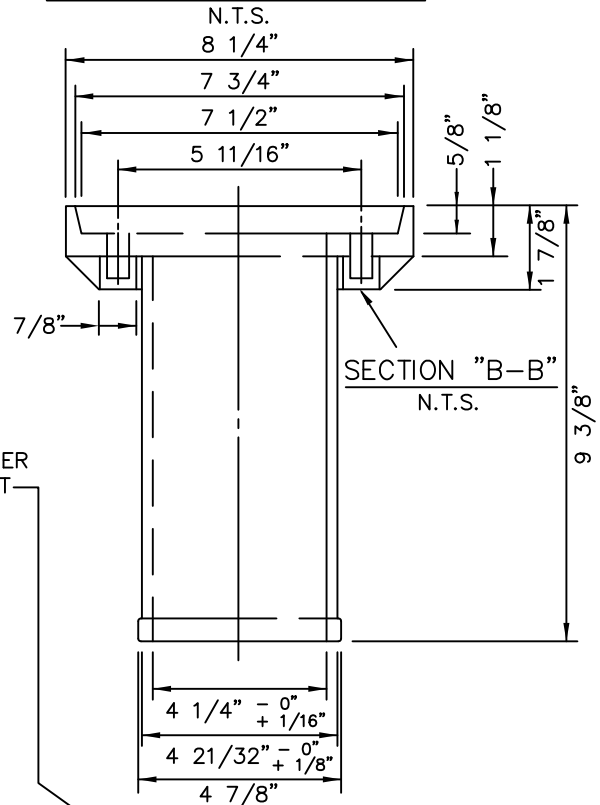
CLEANOUT FRAME BOTTOM
N.T.S.

NOTES:

1. THE WORDS "WASTEWATER LATERAL CLEANOUT" SHALL BE CAST INTO TOP OF COVER.
2. MATERIALS TO BE CAST IRON, P.V.C. OR ABS PLASTIC.



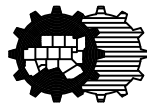
CLEANOUT FRAME TOP
N.T.S.



ASSEMBLY VIEW
N.T.S.

WASTEWATER LATERAL
CLEANOUT FRAME & COVER

North Central Texas Council of Governments

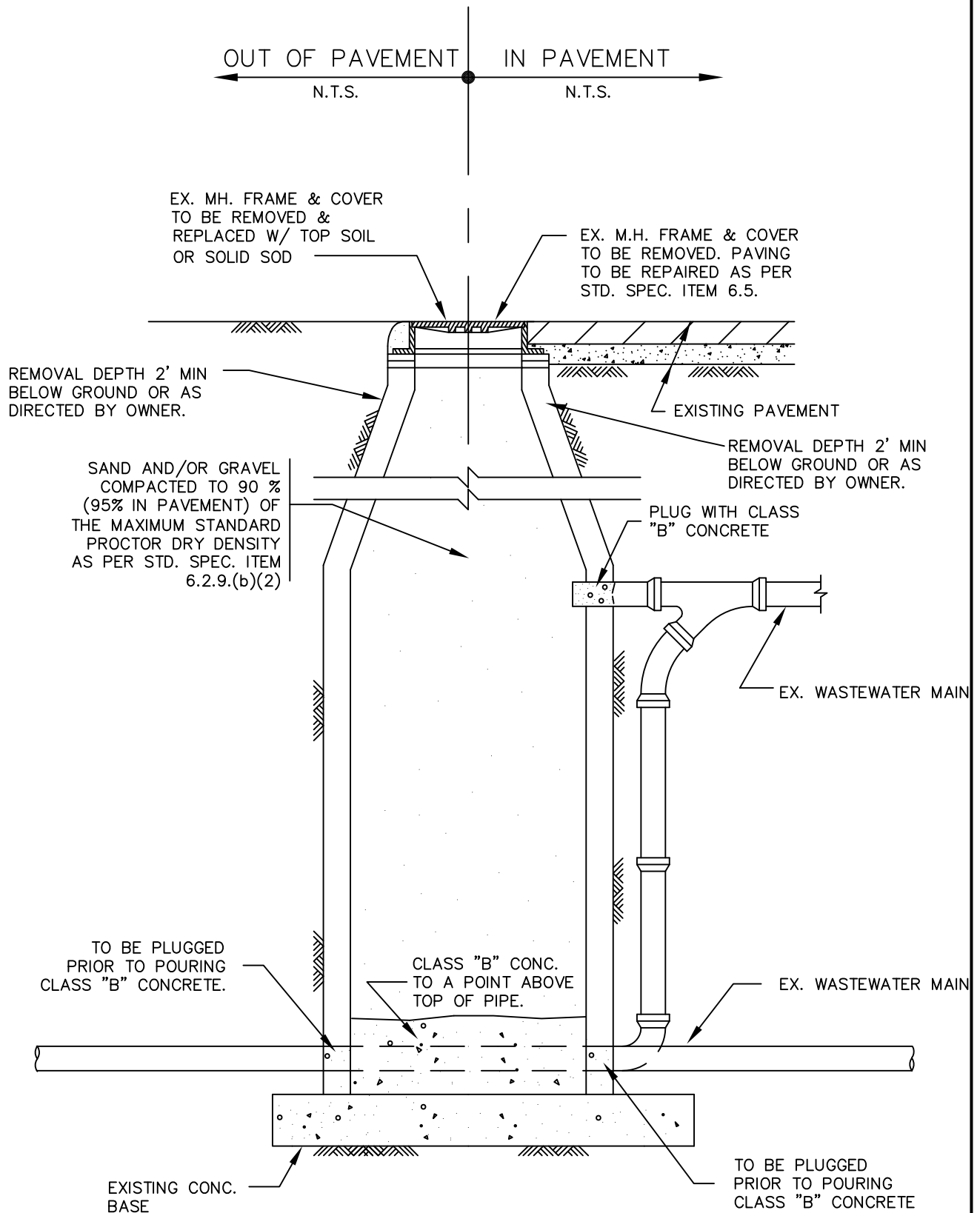


STANDARD SPECIFICATION REFERENCE

502.10

DATE
AUG '23

STANDARD DRAWING NO.
5140



ABANDONMENT OF MANHOLE IN OR OUT OF PAVEMENT

North Central Texas Council of Governments



STANDARD SPECIFICATION REFERENCE

504

DATE
AUG '23

STANDARD DRAWING NO.

5170