



A dirt trail winds through a lush green forest. In the foreground, two wooden signs are mounted on a post. The top sign is dark brown with gold lettering and an arrow pointing up. The bottom sign is also dark brown with gold lettering. The background shows a path leading into a dense forest of tall trees.

↑ CITY OF MELISSA

STAY ON TRAIL

CITY TRAIL MASTER PLAN GOALS:

- 1. ENSURE THE TRAIL SYSTEM CONNECTS ACROSS THE CITY.**
- 2. PROVIDE DEVELOPERS GUIDANCE ON WHERE TO PLACE TRAIL CONNECTIONS**
- 3. ASSIST THE 4B BOARD WITH DIRECTION FOR POTENTIAL FUTURE PROJECTS**
- 4. ASSIST IN THE TRAIL GRANT APPLICATION PROCESS FOR FUTURE TRAILS**

TRAILS MASTER PLAN



MCKINNEY

ANNA

MELISSA

ENLARGEMENT D

ENLARGEMENT B

ENLARGEMENT E

ENLARGEMENT A

ENLARGEMENT C

CITY LIMITS

E.T.J. LIMITS

CITY LIMITS

E.T.J. LIMITS

LEGEND

- CITY LIMITS
- EXISTING TRAILS
- PLANNED TRAILS
- REMAINING LINKS
- MAJOR ROAD CROSSINGS
- ADJACENT CITY CONNECTIONS
- EXISTING CITY PARKS
- CITY OWNED LAND WITH FUTURE PARK CONVERSION
- EXISTING PRIVATE PARKS
- PROPOSED PRIVATE PARKS

OVERPASS CROSSING

CONNECTION TO
PLANNED COLLIN
COUNTY TRAIL
SYSTEM

APRIL 2021

Pacheco Koch



TRAILS ENLARGEMENT PLAN A

1



ACROSS FROM THE FIRST MELISSA CHURCH LOOKING WEST

2

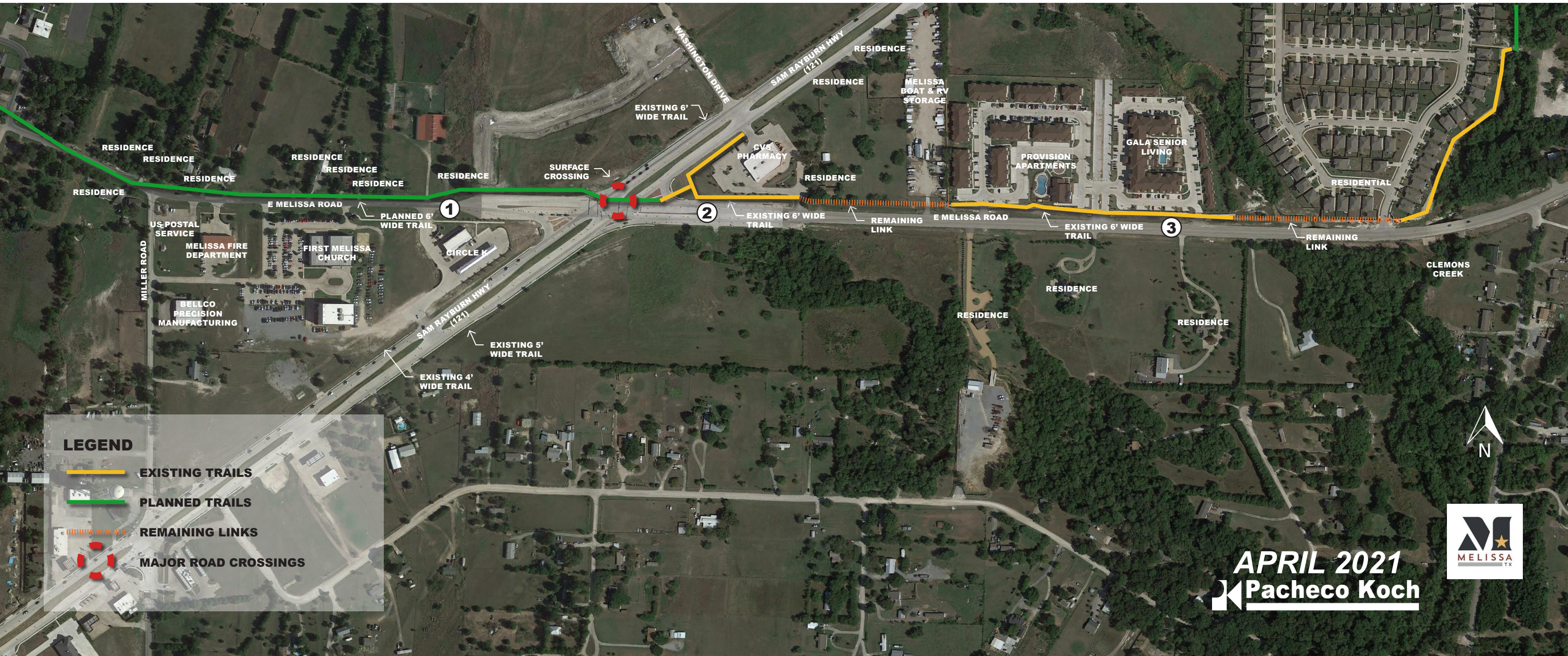


CVS PHARMACY LOOKING SOUTH

3



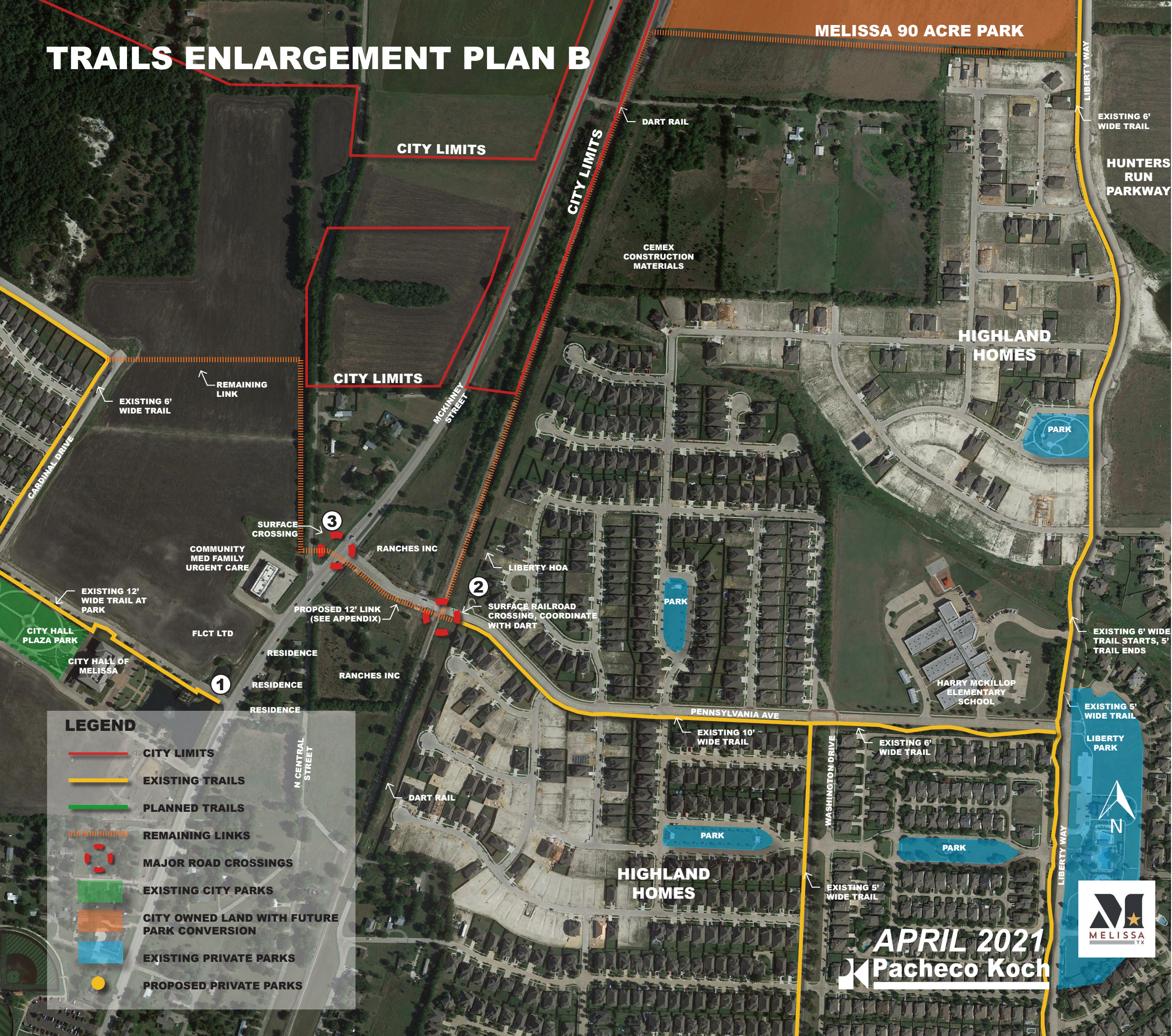
ADJACENT TO GALA SENIOR LIVING LOOKING WEST



APRIL 2021
Pacheco Koch



TRAILS ENLARGEMENT PLAN B



HWY 5 AT CITY HALL LOOKING NORTH

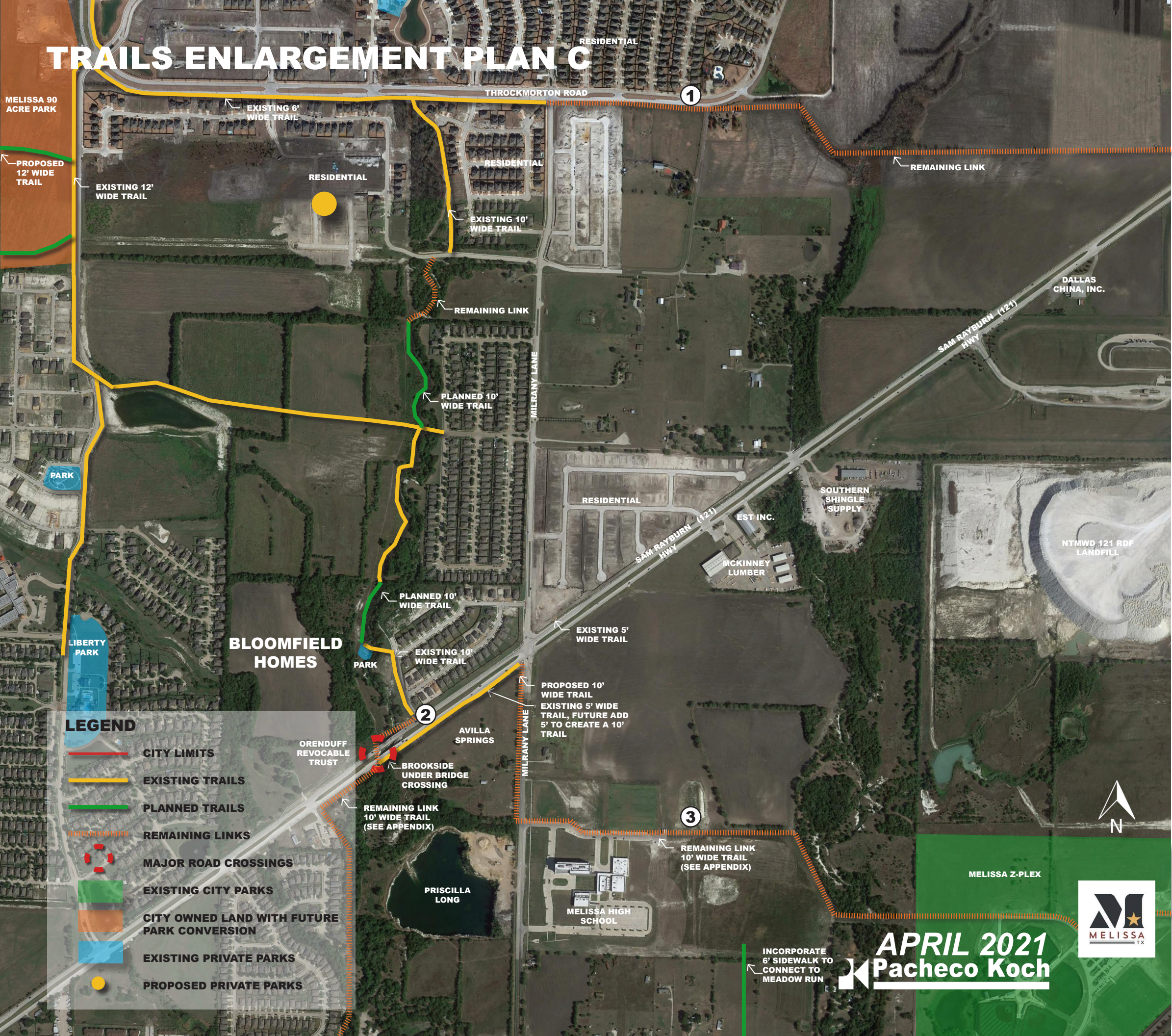


DART RAIL ADJACENT LOOKING NORTH



HWY 5 SURFACE CROSSING AT PENNSYLVANIA AVE

TRAILS ENLARGEMENT PLAN C



THROCKMORTON ROAD LOOKING EAST



121 SAM RAYBURN HWY OVERPASS LOOKING SOUTHEAST

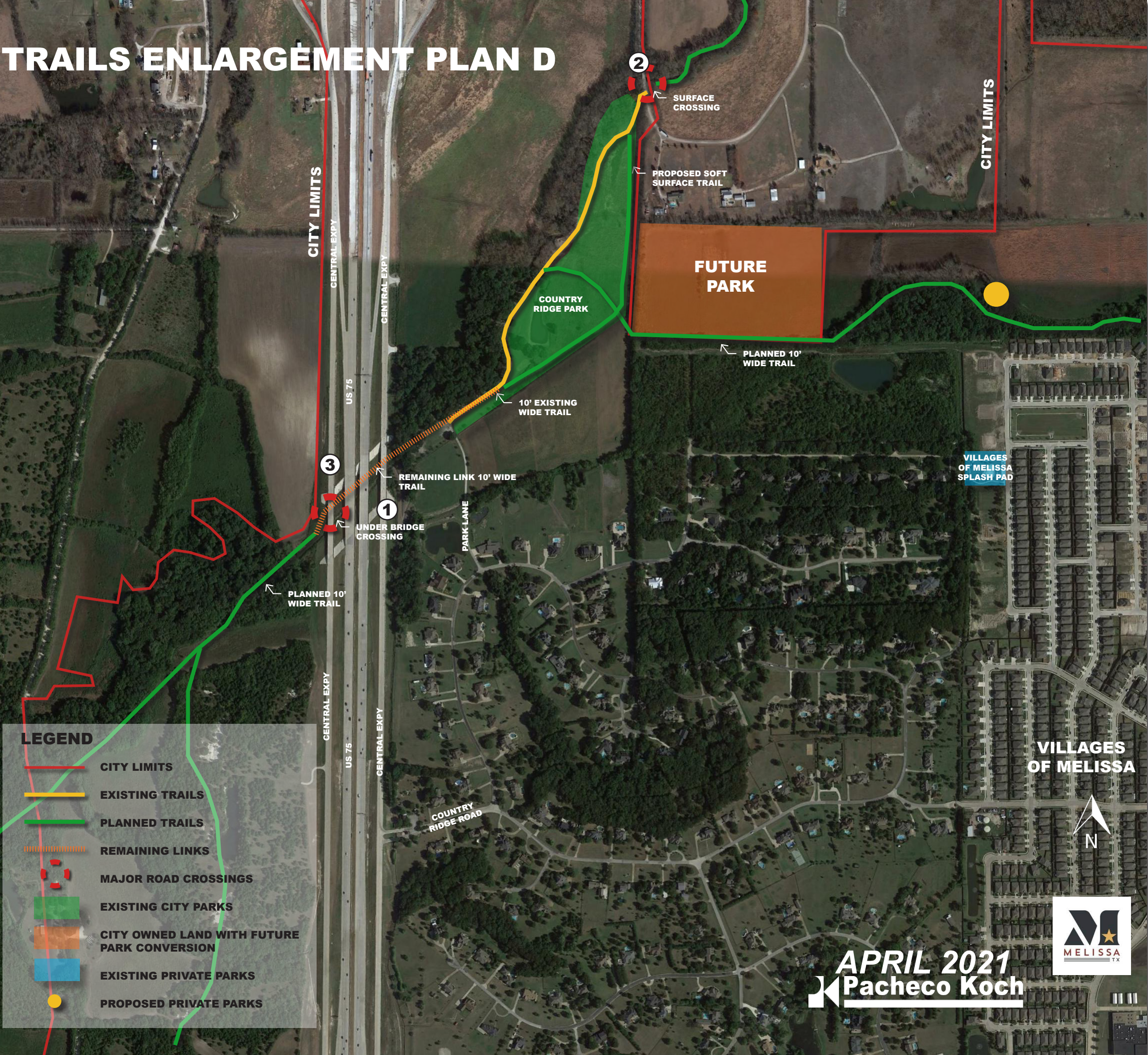


PROPOSED TRAIL FROM MELISSA HIGH SCHOOL TO THE Z-PLEX LOOKING EAST

APRIL 2021
Pacheco Koch



TRAILS ENLARGEMENT PLAN D



1
UNDER HWY 75 BRIDGE CROSSING LOCATION LOOKING EAST



THROCKMORTON CROSSING LOCATION LOOKING SOUTH

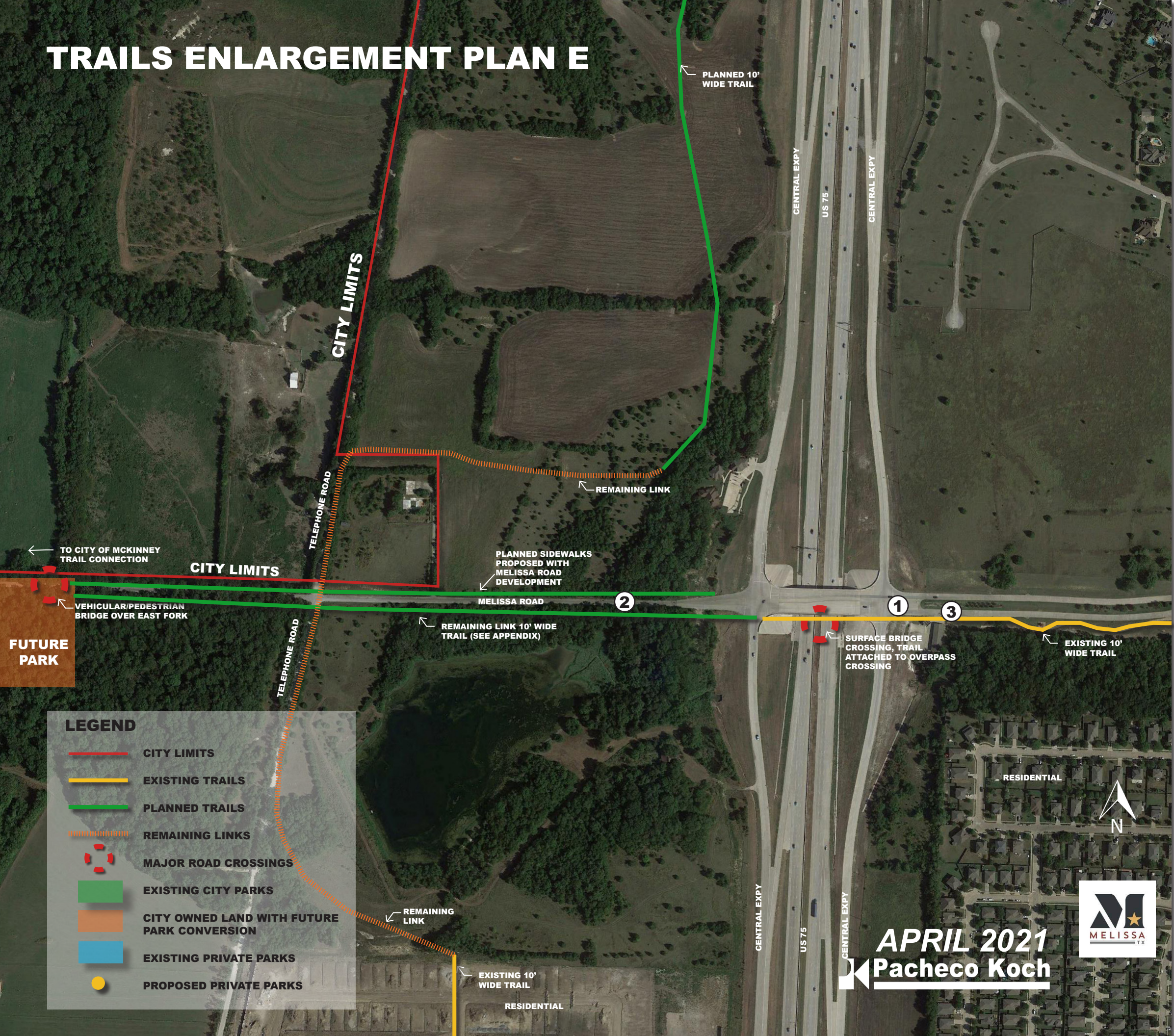


3
UNDER HWY 75 BRIDGE CROSSING LOCATION LOOKING WEST

APRIL 2021
Pacheco Koch



TRAILS ENLARGEMENT PLAN E



HWY 75 BRIDGE CROSSING LOCATION LOOKING WEST



MELISSA ROAD LOOKING WEST



MELISSA ROAD LOOKING EAST