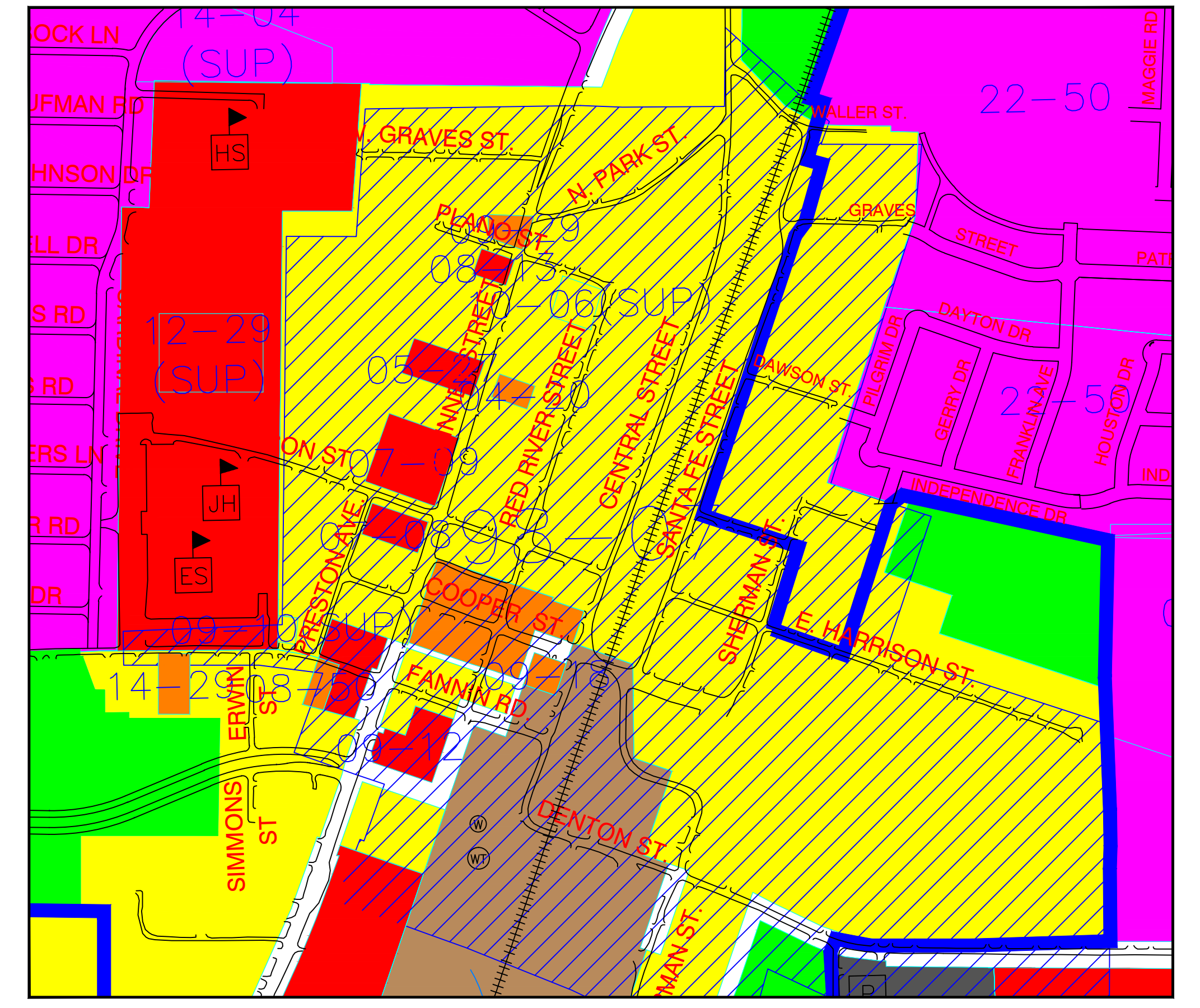
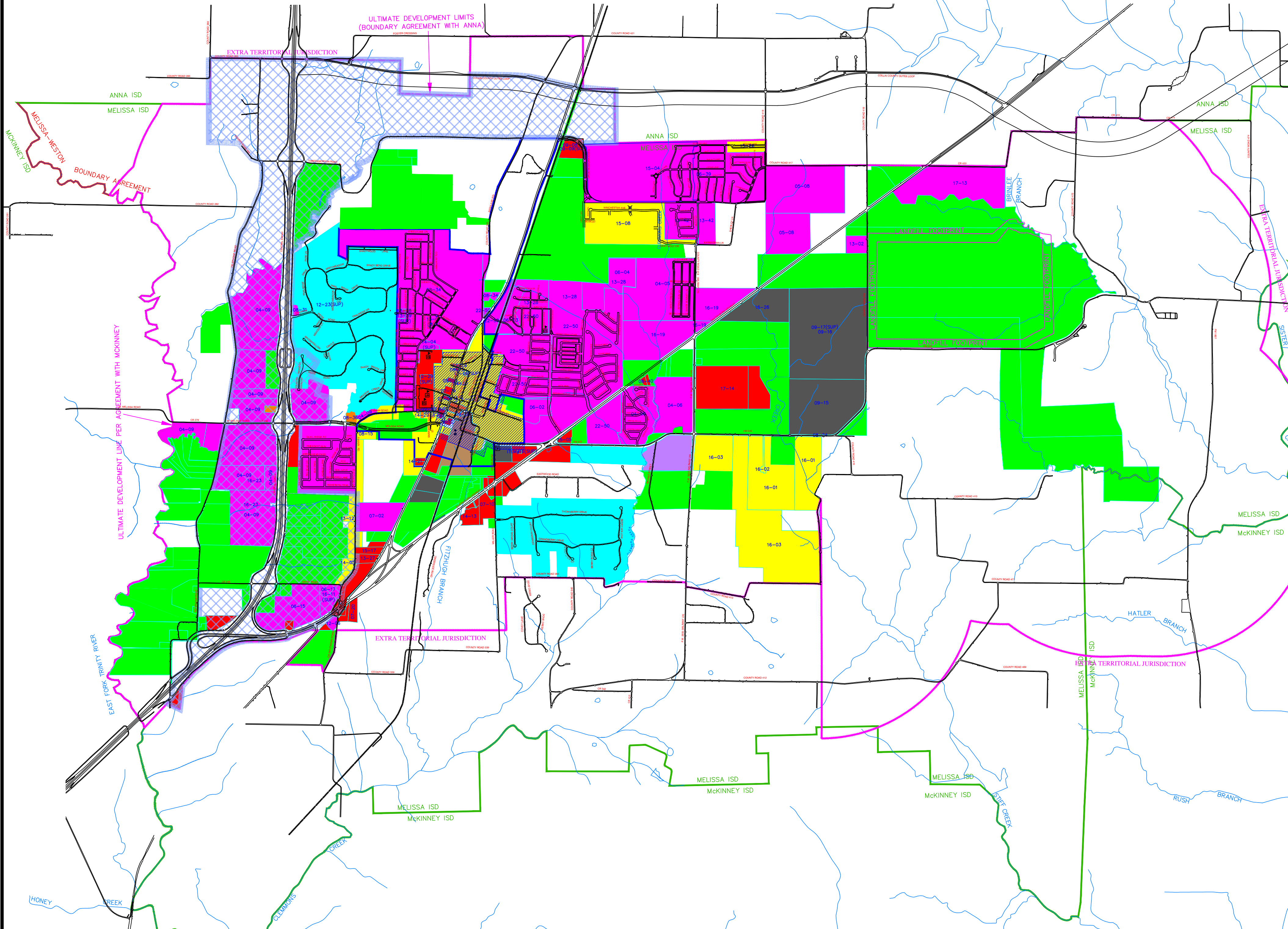
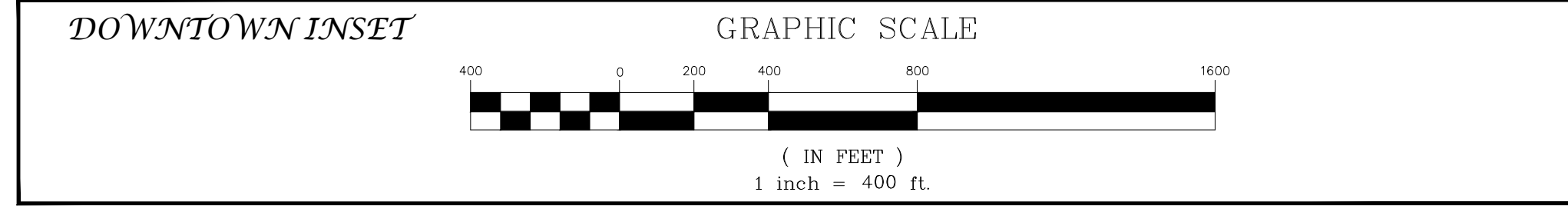
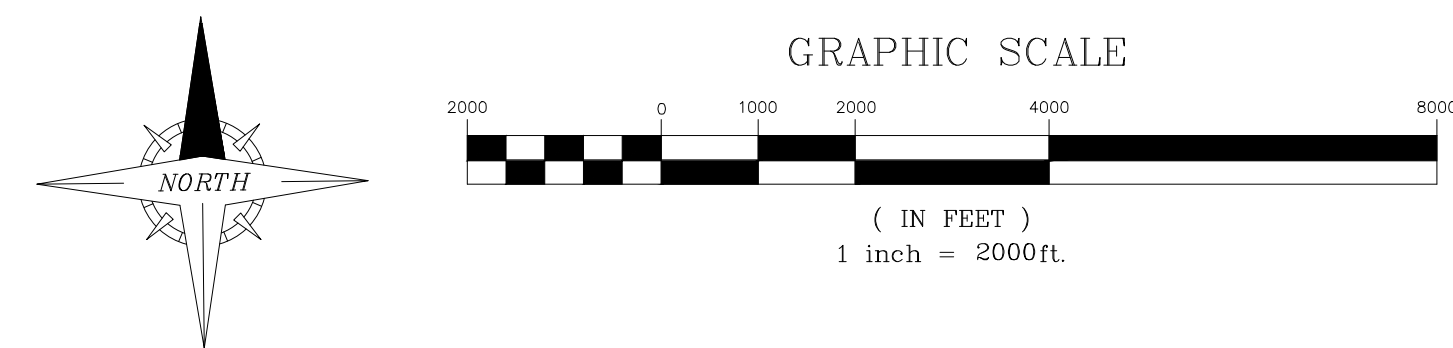


CITY OF MELISSA, TEXAS

OFFICIAL ZONING MAP - REVISED 2-21-2017



ORDINANCE ZONING NUMBER ON MAP	DATE OF ZONING	ANNEXATION ORDINANCE NUMBER	DATE OF ANNEXATION
85-17	OCTOBER 16, 1985	SUBDIVISION REGULATIONS	
92-08	AUGUST 25, 1992	ZONING ORDINANCE	
97-12	DECEMBER 9, 1997	LANDSCAPE REGULATIONS	
98-07	JULY 14, 1998	CREATION OF HISTORIC OVERLAY DISTRICT	
98-08	JULY 14, 1998	REVISION TO 92-08	
22-23	JULY 10, 2001	SUSPENSION (ACCEPTANCE OF APPLICATIONS)	
22-50	OCTOBER 9, 2002	22-47	OCTOBER 8, 2002
22-53	OCTOBER 22, 2002	SIGN ORDINANCE	
03-17*	AUGUST 12, 2003	22-09	NOVEMBER 14, 2000
04-02*	MARCH 10, 2004	22-09	NOVEMBER 14, 2000
04-05	MARCH 23, 2004	04-03, 04-04	MARCH 23, 2004
04-06	APRIL 27, 2004	03-16	AUGUST 12, 2003
04-09	MAY 25, 2004	03-08	JUNE 10, 2003
04-12*	JUNE 22, 2004	VILLAGES OF MELISSA PD	
04-13*	JULY 27, 2004	REPLACED BY ORDINANCE 13-42	
04-15*	AUGUST 24, 2004	ORIGINAL DONATION REPLACED BY 07-09	
04-20	SEPTEMBER 28, 2004	ORIGINAL DONATION	
05-03*	OCTOBER 26, 2004	04-16	SEPTEMBER 14, 2004
05-08	DECEMBER 14, 2004	03-14	JULY 22, 2003
05-09	DECEMBER 20, 2004	03-15	JULY 22, 2003
05-27	MAY 24, 2005	ORIGINAL DONATION	

ORDINANCE ZONING NUMBER ON MAP	DATE OF ZONING	ANNEXATION ORDINANCE NUMBER	DATE OF ANNEXATION
05-34	JUNE 28, 2005	05-30	JUNE 14, 2005
05-35	JULY 26, 2005	05-29	JUNE 14, 2005
06-01	OCTOBER 25, 2005	22-47	OCTOBER 8, 2002
06-02	OCTOBER 25, 2005	22-47	OCTOBER 8, 2002
06-03	OCTOBER 25, 2005	22-47	OCTOBER 8, 2002
06-04	OCTOBER 25, 2005	22-47	OCTOBER 8, 2002
06-15	JANUARY 10, 2006	05-31	JUNE 14, 2005
06-17	FEBRUARY 28, 2006	05-36	AUGUST 30, 2005
06-39	SEPTEMBER 26, 2006	04-08	MAY 11, 2004
06-40*	SEPTEMBER 26, 2006	REPLACED BY ORDINANCE 13-42	
06-41	SEPTEMBER 26, 2006	AMENDMENTS TO ZONING ORDINANCE	
ITEM#16 (SUP)	SEPTEMBER 26, 2006	87-11	OCTOBER 27, 1987
07-02	JANUARY 9, 2007	07-01	NOVEMBER 14, 2006
07-08	FEBRUARY 27, 2007	ORIGINAL DONATION (REPLACES 04-15)	
07-09	FEBRUARY 27, 2007	ORIGINAL DONATION	
07-10	FEBRUARY 27, 2007	98-09	JULY 14, 1998
07-20	APRIL 24, 2007	05-04	OCTOBER 26, 2004
08-13	FEBRUARY 26, 2008	ORIGINAL DONATION	
08-15	MARCH 25, 2008	08-08	JANUARY 8, 2008
		05-13	JANUARY 11, 2005
		05-14	FEBRUARY 1, 2005

ORDINANCE ZONING NUMBER ON MAP	DATE OF ZONING	ANNEXATION ORDINANCE	DATE OF ANNEXATION
08-31	MAY 27, 2008	COUNTRY RIDGE PARCEL	
08-34	JUNE 24, 2008	03-08	JUNE 10, 2003
08-36	JULY 22, 2008	08-35	JULY 22, 2008
08-40	AUGUST 12, 2008	08-39	AUGUST 12, 2008
08-50	SEPTEMBER 22, 2008	ORIGINAL DONATION	
09-08	DECEMBER 9, 2008	08-27	MAY 13, 2008
09-09(SUP)	DECEMBER 9, 2008	SPECIFIC USE PERMIT - CONCRETE BATCHING PLANTS	
09-10(SUP)	JANUARY 23, 2009	SPECIFIC USE PERMIT - GROUP DAY CARE HOME	
09-12	JANUARY 13, 2009	ORIGINAL DONATION	
09-15	MARCH 10, 2009	22-09	NOVEMBER 14, 2000
09-16	MARCH 10, 2009	04-16	SEPTEMBER 14, 2004
09-17(SUP)	MARCH 10, 2009	SPECIFIC USE PERMIT - MANAGEMENT OF UNCLASSIFIED EARTHEN MATERIALS	
09-18	APRIL 28, 2009	ORIGINAL DONATION	
09-21	JULY 28, 2009	CLERICAL CORRECTION TO 09-16	
09-29	SEPTEMBER 22, 2009	ORIGINAL DONATION	
10-06(SUP)	JANUARY 26, 2010	SPECIFIC USE PERMIT - WOOD HOME EXTERIOR INSTEAD OF MASONRY	
12-06	NOVEMBER 29, 2011	07-16	MAY 8, 2007
12-23(SUP)	MAY 8, 2012	SPECIFIC USE PERMIT - HOME OCCUPATION	
12-29(SUP)	SEPTEMBER 11, 2012	SPECIFIC USE PERMIT - TEMPORARY STADIUM FACILITIES	
13-02	OCTOBER 23, 2012	95-03	MAY 23, 1995
13-07(SUP)	FEBRUARY 12, 2013	SPECIFIC USE PERMIT - VILLAGES OF MELISSA AMENITY CENTER	

ZONING ORDINANCE NUMBER ON MAP	DATE OF ZONING	ANNEXATION ORDINANCE NUMBER	DATE OF ANNEXATION
13-12	MARCH 26, 2013	13-10	FEBRUARY 26, 2013
13-27	JUNE 30, 2013	13-29	JULY 9, 2013
13-28	JULY 4, 2013	AMENDMENTS TO ZONING ORDINANCE	
13-38	JULY 23, 2013	13-36	JULY 23, 2013
13-39(SUP)	JULY 23, 2013	SPECIFIC USE PERMIT - WATER PUMP STATION, STORAGE TANK AND TREATMENT	
13-42	AUGUST 27, 2013	06-30, 04-10	AUGUST 8, 2006 JULY 13, 2004
14-04(SUP)	OCTOBER 10, 2013	SPECIFIC USE PERMIT - PARKING FACILITIES	
14-05	OCTOBER 22, 2013	14-03	OCTOBER 8, 2013
14-13	MARCH 25, 2014	85-05	FEBRUARY 11, 1985
14-21	JULY 22, 2014	AMENDMENTS TO ZONING ORDINANCE	
14-29	SEPTEMBER 11, 2014	AMENDMENTS TO ZONING ORDINANCE	
15-04	NOVEMBER 4, 2014	04-08	MAY 11, 2004
15-05	DECEMBER 20, 2014	13-30	JULY 23, 2013
15-08	FEBRUARY 12, 2015	15-02	OCTOBER 14, 2014
15-09	FEBRUARY 12, 2015	15-03	OCTOBER 14, 2014
15-17	MAY 26, 2015	15-19	JUNE 9, 2015
15-28	SEPTEMBER 22, 2015	15-30	SEPTEMBER 22, 2015
16-01	OCTOBER 27, 2015	16-02	OCTOBER 27, 2015
16-03	OCTOBER 27, 2015		
16-11(SUP)	DECEMBER 15, 2015	SPECIFIC USE PERMIT - MOTORCYCLE SALES/SERVICES	
16-19	MARCH 22, 2016		
16-23	MAY 10, 2016		
16-26	MAY 24, 2016		
17-13	NOVEMBER 8, 2016		

ZONING ORDINANCE NUMBER ON MAP	DATE OF ZONING	ANNEXATION ORDINANCE NUMBER	DATE OF ANNEXATION
17-14	NOVEMBER 8, 2016		
17-15	NOVEMBER 8, 2016		
17-16	NOVEMBER 8, 2016		

*NOT SHOWN ON MAP-REPLACED BY MORE RECENT ORDINANCES

*NOT SHOWN ON MAP-REPLACED BY MORE RECENT ORDINANCES

- "A" = Agricultural District
- "SF-1" = Single Family Residential District
- "SF-2" = Single Family Residential District
- "SF-3" = Single Family Residential District
- "MF" = Multi-Family Residential District
- "MH" = Manufactured Home Park District
- "C-1" = Restricted Commercial District
- "C-2" = General Commercial District
- "I-1" = Light Industrial District
- "I-2" = Heavy Industrial District
- "PD" = Planned Development District
- "HO" = Historic Overlay District
- Commercial Corridor Overlay District
- TIF Boundary

AREA WITHIN EXTRATERRITORIAL JURISDICTION: 25 SQUARE MILES
TOTAL AREA OF CITY LIMITS: 12 SQUARE MILES (APPROXIMATE)

