

# City of Melissa

## Fiscal Year 2016 Budget at a Glance

**\$0.61 Tax Rate**

**Eighth (8<sup>th</sup>) Year in a Row**

### Fiscal Year (FY) 2016 Strategic Goals

- Focus on beautification efforts to enhance drive through appeal in order to increase property values and sustain community pride.
- Focus on creating opportunities for citizen participation and citizen connections.
- Invest in community efforts in order to build a sense of community, to get information to all citizens, and to create channels for feedback.
- Commit to marketing Melissa in order to communicate who we are, and what we offer.
- Foster an environment that reflects our small town character while supporting a strong, diverse, and growing economy.
- Proactively safeguard our community as our family.

### \$5.3 Million General Fund Budget

- **Balanced**
- **New Fire Department Personnel**
- **Police Department Salary Adjustment**
- **Improved Library space**
- **Upgrades to digital radios**
- **Implementation of Grand Market**
- **Website upgrades for better communication**
- **Right-of-Way (R-O-W) maintenance with addition of Park staff**

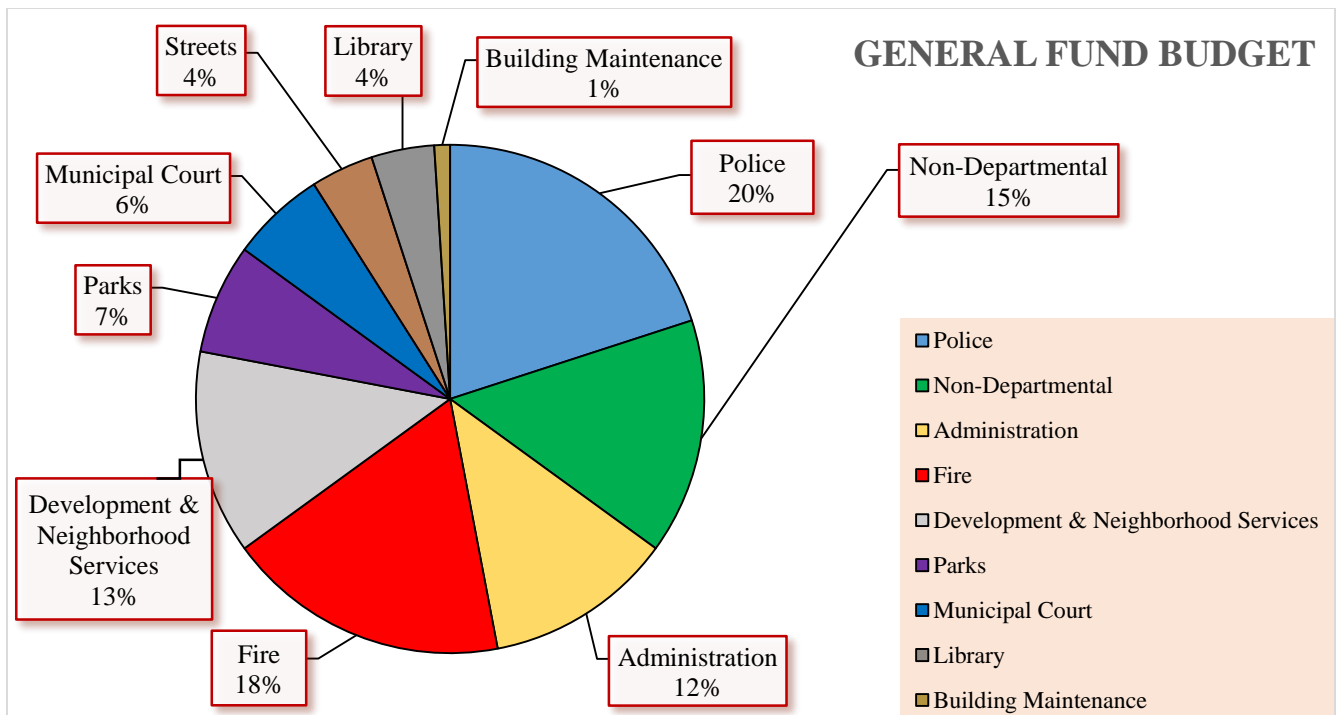
### Average Home Values



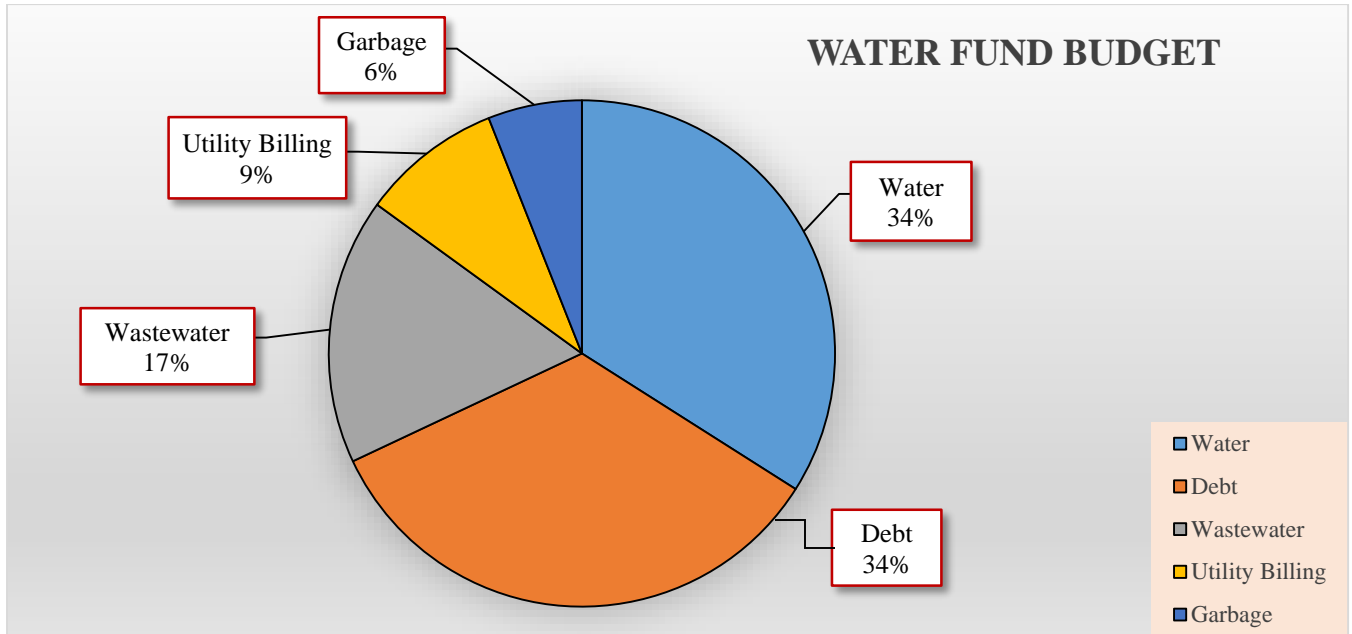
**FY2016**  
\$ 225,664 value  
\$ 1,376.55 taxes



**FY2015**  
\$207,000 value  
\$1,262.70 taxes



# City of Melissa Fiscal Year 2016 Budget at a Glance



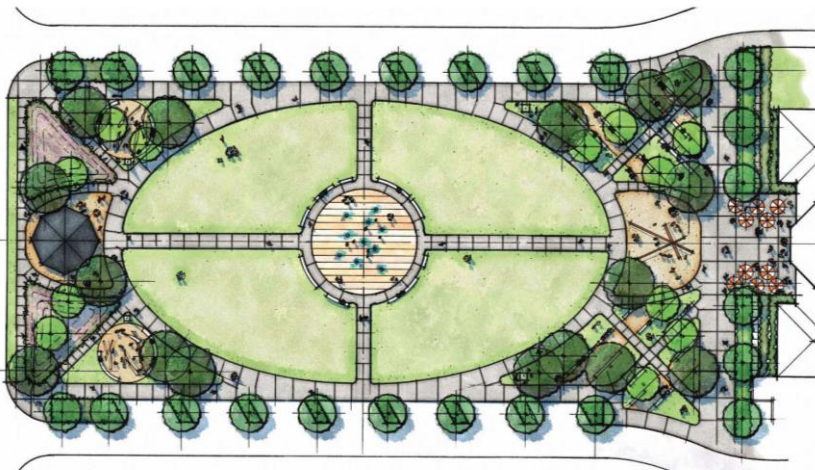
## \$5 Million Water Fund Budget

- Rate study completed
- Stable reserve balance
- Conservation realized
- No rate increase is proposed in FY2016

Advanced Metering  
Infrastructure (AMI)  
Program

## CITY HALL PARK

Coming Soon...  
June 2016



The City of Melissa has partnered with FATHOM Water Management to streamline and modernize the process of providing water and accurate billing for utilities. FATHOM uses advanced AMI data analysis to drive utility billing in order to push data into the hands of customers – making them smarter consumers of water. This partnership allows the City to provide high touch customer care with a superior level of automated services utilizing AMI technology providing accurate and consistent water meter reads. Within six months, residents will be able to track their own water usage on an hourly basis. An exchange of aging meters and installation of AMI technology is planned to begin in mid-October with a scheduled completion of mid-February 2016. Learn more at:

[http://www.cityofmelissa.com/AMI\\_Program.html](http://www.cityofmelissa.com/AMI_Program.html)