

Melissa Development Quarterly Update

Period Ending September 2017

Melissa Population (1980 – 2017)							
Year	Population	Year	Population	Year	Population	Year	Population
1980*	604	2003	2,524	2008	4,185	2013	6,154
1990*	557	2004	2,846	2009	4,483	2014	6,703
2000*	1,539	2005	3,172	2010*	4,695	2015	7,800
2001	1,885	2006	3,536	2011	5,200	2016	9,000
2002	2,211	2007	3,869	2012	5,700	2017 est.	10,000

*Official Census figure

Building Permit Summary

Development Type	3rd Quarter 2017		2017 Summary	
	Permits Issued	Valuation	Permits Issued	Valuation
Single Family	79	\$19,737,646	264	\$66,742,998

Building Permit Comparison - Single Family Permits

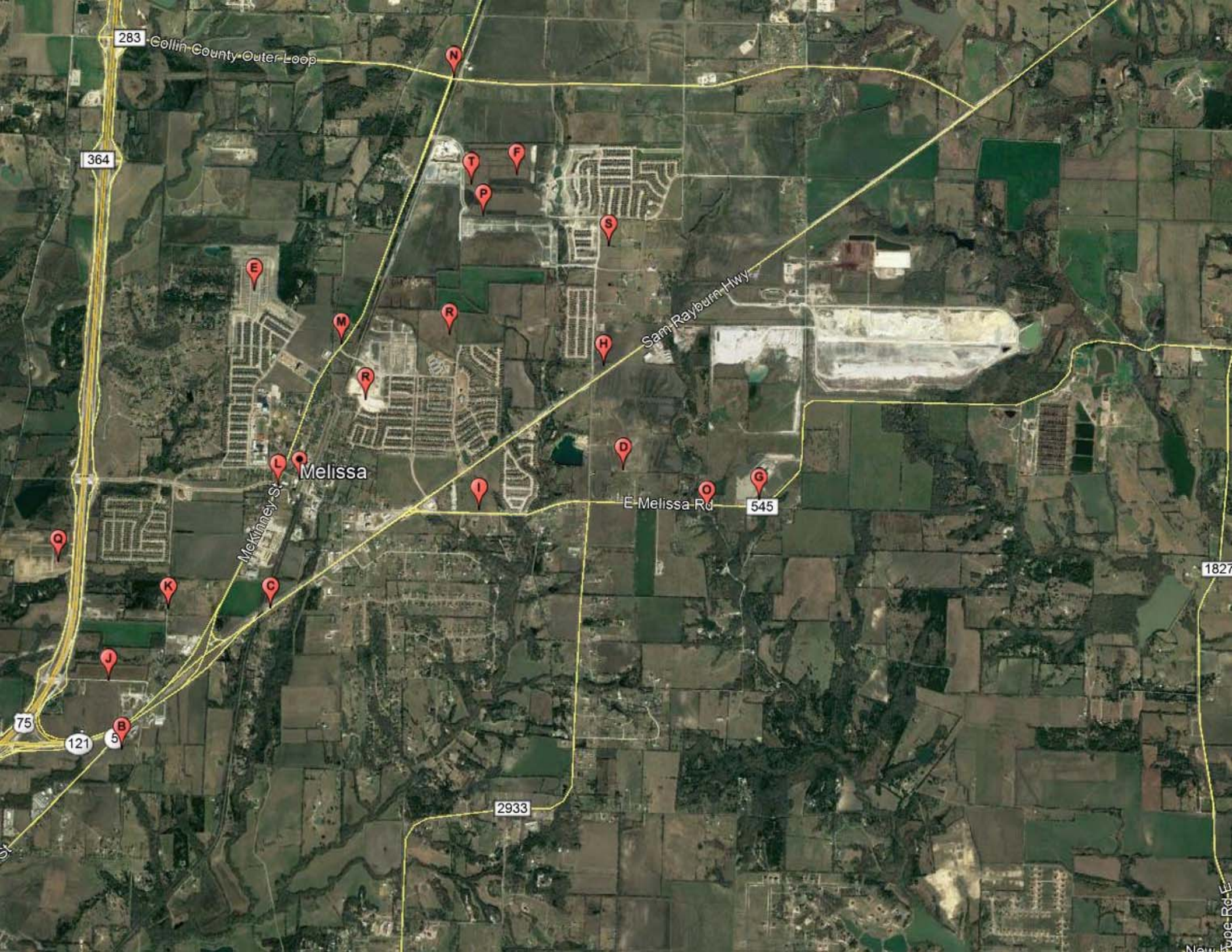
Quarter	2015		2016		2017	
	Permits	Valuation	Permits	Valuation	Permits	Valuation
1 st	87	\$18,135,286	66	\$17,034,039	63	\$ 17,115,011
2 nd	78	\$17,861,085	61	\$16,445,888	122	\$29,890,341
3 rd	141	\$30,825,289	43	\$11,861,774	79	\$19,737,646
4 th	71	\$15,929,122	56	\$16,922,806	-	-
Total	377	\$82,750,782	226	\$62,264,507	264	\$66,742,998

Approved Single Family Platted Lots

	Jan	Feb	Mar	Apr	May	Jun	Jul	Aug	Sep	Oct	Nov	Dec	YTD
2017	119	468	125	-	-	-	-	183	120	-	-	-	1,015
2016	-	-	81	-	-	-	-	167	-	-	-	-	248
2015	108	-	-	-	85	-	-	-	-	140	341	-	674
2014	-	-	76	96	-	-	-	137	-	-	-	-	309
2013	61	-	-	83	84	70	-	-	88	92	-	-	478

Sales Tax Comparison

	2017 Sales Tax to Date
McKinney	\$37,818,414
Roanoke	\$10,936,487
Prosper	\$5,188,269
Fairview	\$2,388,645
Sunnyvale	\$1,977,700
Princeton	\$1,819,916
Melissa	\$1,700,298
Anna	\$1,592,887
Celina	\$1,447,062
Van Alstyne	\$903,785



283 Collin County Outer Loop

364

Melissa

Mckinney St

Sam Rayburn Hwy

E-Melissa Rd

545

2933

1827

New Hope Rd E

N

T

F

P

S

E

M

R

H

R

D

I

O

G

Q

K

C

J

B

121

5

75

Point	Project	General Description
A	TxDOT Green Ribbon Grant Funding	City awarded \$2.5 million grant from TxDOT for the beautification of the US 75 and SH 121 interchange. Project is being procured by the State. Construction to begin in late 2017.
B	Highway 5 realignment	With the SH 121 project, SH 5 intersection will realign with CR 339 between RaceTrac and First National Bank of Trenton.
C	SH 121 Reconstruction	SH 121 will be widened from SH 5 to west of the Outer Loop Anna. It is expected to take approximately two and a half years to build the project and the estimated completion is fall of 2018. Lane shifts are expected throughout the fall, at which time construction will shift to the northbound lanes.
D	Melissa High School	First phase of the new High School; estimated completion Summer 2018.
E	Villages of Melissa	Villages of Melissa subdivision expansion
F	North Creek Expansion	Completion of the residential lots on the west side of the subdivision.
G	100 acre City Athletic Complex	Phase 1 of a multi phased facility; Phase 1 will consist of practice field, two competition baseball fields with shade structures with stadium type seating, concession stand/ restroom building, bullpen & soft toss screen, and competition soccer fields (unlit soccer fields with 4 practices baseball backstops). Estimated completion is fall 2017; opening To Be Determined.
H	Brookside	Second Phase to begin in late 2017, early 2018.
I	Gala and Provision at Melissa	Senior only apartment and traditional apartment complex being constructed. Completion expected mid to late 2018.
J	Davis Road	2007 Bond Election project; Construction anticipated in late 2017.
K	Fannin Road	2007 Bond Election project; Construction anticipated in late 2017.
L	Traffic Signal	TxDOT to install traffic signal at Fannin and SH 5; anticipated by late 2017.
M	Pennsylvania/SH 5	The traffic signal study met TxDOT warrants, and City and TxDOT have agreed that TxDOT will design the signal and the City will construct the signal. Design expected late 2017; construction to be determined.
N	Outer Loop/SH 5	City requested TxDOT traffic signal warrant study. TxDOT approved the intersection for signalization. DART is designing the preemption equipment for the signal. No timetable for construction.
O	Stiff Creek Sewer	Sanitary sewer line to serve Stiff Creek basin including the High School, Sports Facility, and the basin.
P	Throckmorton Road	Extension from SH 5 to Milrany; Construction contract awarded to Mario Sinacola; Construction begins in July; Anticipated completion in spring 2018.
Q	Auburndale	Clearing of area for future single family lot development.
R	Liberty Phase 5&6	Liberty subdivision expansion
S	Magnolia Ridge Phase 2	Magnolia Ridge subdivision expansion
T	North Creek Elementary School	New Elementary School; estimated completion Summer 2018.