

# Melissa Development Quarterly Update

**Period Ending March 2016**

Melissa Population (1980 – 2016)							
Year	Population	Year	Population	Year	Population	Year	Population
1980*	604	2003	2,524	2008	4,185	2013	6,154
1990*	557	2004	2,846	2009	4,483	2014	6,703
2000*	1,539	2005	3,172	2010*	4,695	2015	7,800
2001	1,885	2006	3,536	2011	5,200	2016 est.	9,000
2002	2,211	2007	3,869	2012	5,700		

\*Official Census figure

## Building Permit Summary

Development Type	1st Quarter 2016		2016 Summary	
	Permits Issued	Valuation	Permits Issued	Valuation
Single Family	66	\$17,034,039	66	\$17,034,039

## Building Permit Comparison - Single Family Permits

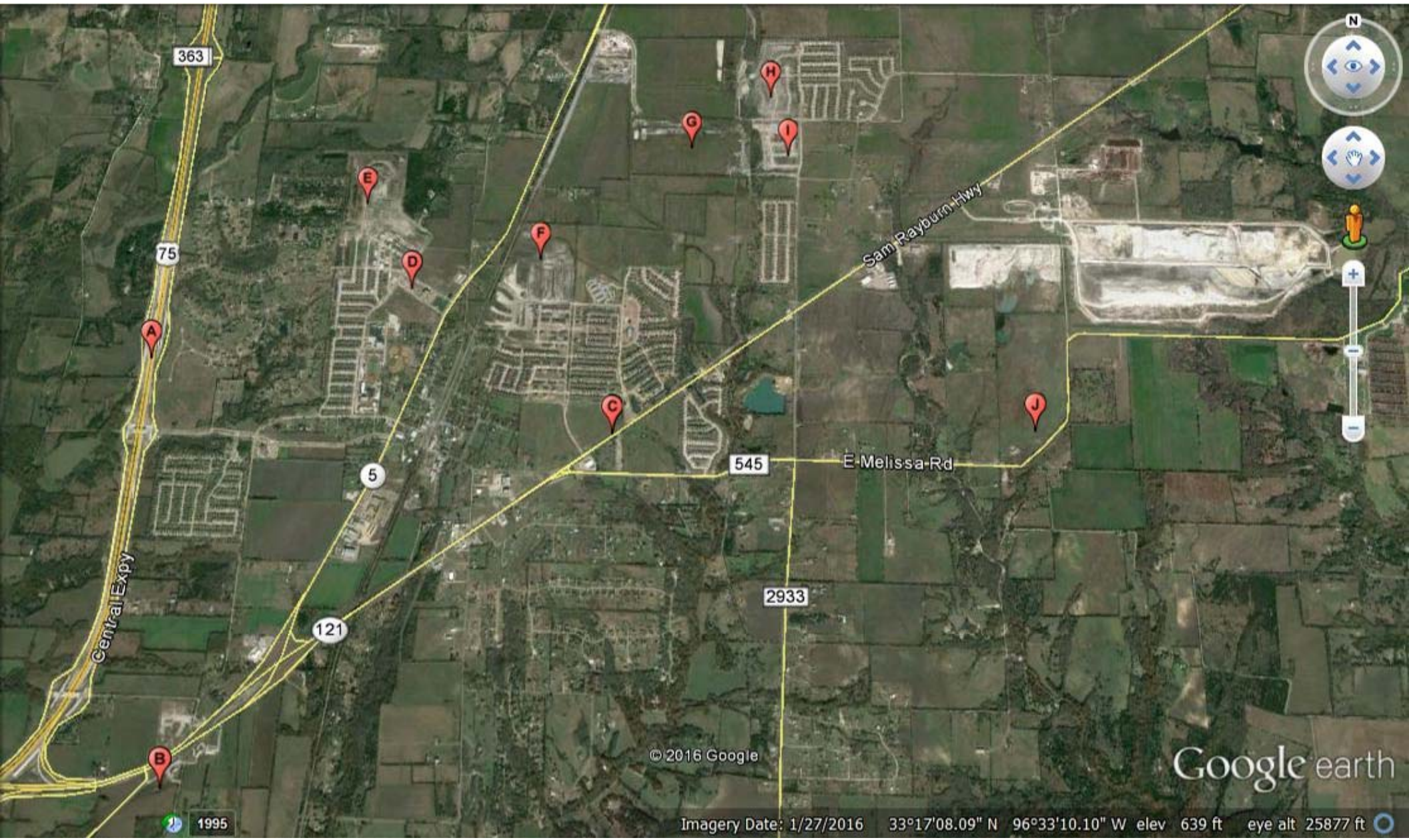
Quarter	2014		2015		2016	
	Permits	Valuation	Permits	Valuation	Permits	Valuation
1 <sup>st</sup>	27	\$6,380,982	87	\$18,135,286	66	\$17,034,039
2 <sup>nd</sup>	108	\$20,793,972	78	\$17,861,085	-	-
3 <sup>rd</sup>	82	\$14,456,936	141	\$30,825,289	-	-
4 <sup>th</sup>	29	\$6,053,140	71	\$15,929,122	-	-
Total	246	\$47,685,030	377	\$82,750,782	66	\$17,034,039

## Approved Single Family Platted Lots

	Jan	Feb	Mar	Apr	May	Jun	Jul	Aug	Sep	Oct	Nov	Dec	YTD
2016	-	-	81										81
2015	108	-	-	-	85	-	-	-					193
2014	-	-	76	96	-	-	-	137	-	-	-	-	309
2013	61	-	-	83	84	70	-	-	88	92	-	-	478

## Sales Tax Comparison

	2016 Sales Tax To Date
McKinney	\$10,900,144.83
Roanoke	\$3,934,099.35
Prosper	\$1,298,407.36
Fairview	\$909,398.68
Sunnyvale	\$641,654.64
Melissa	\$505,460.65
Anna	\$377,755.01
Princeton	\$348,602.67
Celina	\$350,318.79
Van Alstyne	\$240,355.02



363

75

Central Expy

5

121

545

Sam Rayburn Hwy

E-Melissa Rd

2933

© 2016 Google

Google earth

1995

Imagery Date: 1/27/2016 33°17'08.09" N 96°33'10.10" W elev 639 ft eye alt 25877 ft

<b>Point</b>	<b>Project</b>	<b>General Description</b>
A	US 75 Reconstruction	Reconstruction from two lane to six lane section to Melissa Road; Estimated completion late spring 2016; access roads late 2016
B	Highway 5 realignment	With the SH 121 project, SH 5 intersection will realign with CR 339 between RaceTrac and First National Bank of Trenton
C	SH 121 Reconstruction	SH 121 will be widened from SH 5 to west of FM 455 in Anna. The 5.9 mile long project will widen SH 121 from a two lanes to four lanes. Construction includes pavement, drainage structures, signs, signals and pavement markings. It is expected to take approximately two and a half years to build the project and the estimated completion is spring of 2018.
D	City Hall Park	2 acre park with enhanced paving, gazebo, spray fountain, additional landscaping. Estimated completion late spring 2016
E	Villages of Melissa	Phase 3 of the Villages of Melissa subdivision; 161 lots
F	Liberty	204 lots approved, along with the connection of Pennsylvania Avenue to SH 5. Estimated Completion is summer 2016.
G	Creek Crossing	Phase 1 with 98 residential lots approved. Estimated completion is fall 2016.
H	North Creek II & North Creek Estates	235 residential lots in various phases. Estimated completion is fall 2016.
I	Magnolia Ridge	88 lots approved in Phase 1. Completed in winter 2015.
J	100 acre City Athletic Complex	Phase 1 of a multi phased facility; design ongoing